

PINE CREEK

Angus Ranch

A decorative graphic of a pine branch with two brown pine cones, positioned between the main title and the subtitle.

4th Annual Coming 2 Year Old Bull & Bred Heifer Sale

FRIDAY, DECEMBER 20, 2024

1:00 PM MT

FAITH LIVESTOCK AUCTION • FAITH, SD

Friday, December 20, 2024 • 1:00 PM MT

Faith Livestock Auction • Faith, SD
Complimentary lunch served prior to sale



Selling 41 Registered Coming 2 Year Old Angus Bulls & 111 Bred Heifers

Lyle Weiss.....(H) 605-748-2217 or (C) 605-515-0118
Justin Weiss.....(H) 605-748-2408 or (C) 605-290-3059
Faith Livestock Auction.....605-967-2200

Auctioneer: Seth Weishaar.....605-210-1124

Sales Consultants

Andrew Swanson: Regional Angus Breed Rep.....507-829-4133
Vern Frey: Frey Livestock Sales & Service.....701-721-0344
Dan Piroutek.....605-685-4556

Sale Day Representatives

Dace Harper: Faith Livestock Auction.....605-515-1535
Scott Dirk: Tri-State Livestock News.....605-380-6024
Ryan Casteel: Cattle Business Weekly.....605-423-6000
Beau Ravellette: RPI Promotions.....605-685-8155

Herd Health is monitored by:

Dr. Rett Scoggin: Scoggin Veterinary Services.....605-892-4242
Dr. Tammy Winger: Faith Veterinary Services.....605-967-2212

Herd Health

Birth.....Alpha C&D, Inforce 3, Min-Max
Branding.....Bovi-Shield Gold 5, Vista Once SQ, Once PMH-IN
Pre-Weaning.....Nasalgen, Vista Once SQ, Ultrabac 7 / Somubac
Weaning.....Pulmoguard PHM-1, Inforce 3
In November bulls were poured with Clean-Up II w/ IGR. The bulls have had 2 doses of foot rot vaccine. Heifers had their first dose of ScourGuard 4KC and were poured with Clean-Up II in November. All cattle sell with appropriate health papers for interstate shipment.

Bulls will be semen tested and their scrotal measurements will be available sale day.

Herd Nutrition

Jack Sieben:..... J&R Feeds...605-660-9975

Online Bidding

Must be registered to bid at DVAuction.com or www.CattleUSA.com prior to sale day.

Videos

Videos will be available at PineCreekAngusRanch.com and DVAuction.com

DVAuction and
Broadcasting Real-Time Auctions



Announcements

Announcements made sale day will take precedence over any printed information.

Retained Interest

Pine Creek Angus Ranch is retaining one third (1/3) revenue sharing semen interest in every bull selling in the sale.

Heifer Information

The heifers will be sorted into groups according to calving dates. We will start by offering choice of all the heifers, which will include the transfer of registration papers and free delivery up to 350 miles. After choice, the heifers will sell in tag order as commercial. No delivery will be offered on heifers selling without registration papers.

Heifers were ultrasounded on 8/28/24 and given CattleMaster Gold FP 5 L5. They will be reprog checked before sale day.

Delivery

FREE DELIVERY, up to 350 miles. We will keep the bulls until we deliver them or deduct \$100 per head from the purchase price if you take them home from the sale barn. Bulls will be delivered as soon as possible following the sale.

First Breeding Season Guarantee

All bulls in this sale have passed a breeding soundness exam by Scoggin Vet Service. Bulls selling for \$3500.00 or more are guaranteed only against breeding injury during the First Breeding Season. Breeding Season is defined as the 60-day period, following the first turn out of the bull. If a replacement bull is available, he will be provided or if the buyer prefers, credit towards one bull will be given for the next year's sale, less salvage value of the injured bull. All injured bulls must be diagnosed by a licensed veterinarian. We must be notified should injury occur and BEFORE the bull is sold for salvage. A copy of the salvage receipt must be sent to us. All claims must be made by September 1, 2025.

Pine Creek Angus Ranch will not be responsible for more than the purchase price of the bull. Replacement bulls are not covered by this guarantee. This is not mortality insurance.

Insurance

Mortality and Injury Insurance can be purchased through Martin-Trudeau that will cover the bull from Sale Day for 1 Full Year. Martin Trudeau Office.....605-996-3106
Katie Williams.....605-770-9986

Dear Cattle Ranchers,

Our family appreciates your interest in our cattle program, and would like to invite you to join us on sale day. Please, come early to look at the bulls and heifers, and have lunch with us before the sale.

There are a lot of tools available to help with the process of choosing the right sires for each of our cattle herds. We hope the testing that we have done in our herd with Angus GS will help you with that process. Angus GS verifies the parentage, so you know exactly who the parents are, and how that bull should perform in the future. If we can help you in your decision making, we would be happy to visit with you and answer any questions you may have.

As we have always said - we strive for balanced traits, but, maternal traits are our top priority. Our cows are moderate framed, easy fleshing, have adequate milk, good disposition, and breed back every year. We do NOT offer second chances. We believe great cows are the heart of our program, and are using the most advanced technology available to make the best decisions we can.

The bulls were developed on a high roughage ration last winter then turned out to pasture in May.

The bulls will be fertility tested and scrotal measured by Scoggins Vet Service in early December. This information will be available on our website, PineCreekAngusRanch.com, Facebook page, and on the sale day supplement sheet.

The bulls were poured this Fall with Clean-up II.

The heifers were A.I.ed May 2nd and the clean-up bulls were turned out May 16th. They were ultra sound tested August 28th, and will be rechecked before the sale. This fall they were given CattleMaster Gold FP5 L5 and poured with Clean-Up II. They had their first dose of ScourGuard 4KC in November.

Cattle can be viewed here at the ranch until December 17 and in Faith the afternoon of the 18 through sale day.

Thankful for our many Blessings,



Lyle & Miriam

The Weiss Family

YS



Justin, Lacey, Paige, & Grace



17013 Maurine Rd. Faith, SD • PineCreekAngusRanch.com • pcar@gwtc.net
Lyle • Home: 605-748-2217 or Cell: 605-515-0118
Justin • Home: 605-748-2408 or Cell: 605-290-3059



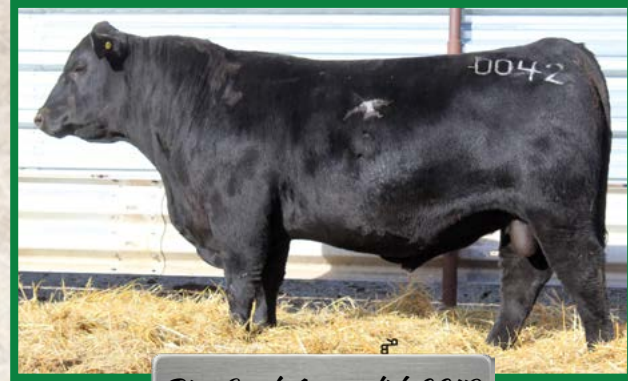
Reference Sires

Pine Creek Accomplish 0042

DOB:2/20/2020 Freeze Brand: 0042 Reg # 19951074
 Poss Achievement Poss Lasting Impact 3118
 Sitz Accomplishment 720F S A V Resource 1441
 Sitz Barbaramere Nell 166D Sitz Barbaramere Nell 14Y
 Mogck Bullseye
 Sitz Bullseye 9994 Sitz Pride 0128
 PCAR Everelda Entense 8180 Sitz Right Answer 644Y
 PCAR Everelda Entense 5251 PCAR Everelda Entense 2024

CED	BW	WW	YW	CEM	Milk
7	2.5	82	153	16	24

0042 is a breed leader ranking in the top 5% in yearling weight, and the top 2% in CEM. 0042 was the top selling bull at our first annual coming 2 year old sale, purchased by Veal Black Angus Ranch of Meadow, SD.



Pine Creek Accomplish 0042

Square B True North 8052

DOB:8/16/2018 Tattoo: 8052 Reg # 19405246
 Coleman Charlo 0256 O C C Paxton 730P
 Bohi Abigale 6014
 S A V Rainfall 6846 S A V 8180 Traveler 004
 S A V Blackcap May 4136 S A V May 2397
 KMK Alliance 6595 I87
 Connealy Consensus Blinda of Conanga 004
 Elbanna of Conanga 1209 Connealy Forward
 Elbasta of Conanga 9703 Elba of Conanga 3761

CED	BW	WW	YW	CEM	Milk
15	-2.2	57	106	13	36

True North offers one of the most versatile and broadly appealing maternal packages at the top end of maternal weaned calf value (\$M) backed by strong docility, foot Quality and hair shedding EPDs.

DL Summation 750

DOB:1/13/2020 Tattoo: 750 Reg # 19867929
 K C F Bennett Consent Y75 K C F Miss Protege W148
 S S Objective T510 0T26
 K C F Bennett Summation Thomas Patricia 9705 Thomas Patricia 71138
 Connealy Final Product
 DL Final Grandview 53 JL Hattie 169
 Mohnen Day Ahead 144
 DL Princess 125 D L Barbara 692
 DL Princess 156

CED	BW	WW	YW	CEM	Milk
13	-0.2	68	135	10	32

750 offers a great combination of breed leading claw set and both Angus-on-Dairy \$Values, feedlot value (\$F), beef grid (\$B), and combined value (\$C).

Sitz Profile 1160

DOB: 01/29/2016 Tattoo: 11606 Reg # 18385986
 Benfield Substance 8506 Benfield Edella 1105
 Mohnen Substantial 272 LT Territory 5824 of EA
 Mohnen Glyn Mawr Elba 1758 Mohnen Glyn Mawr Elba 1345
 Connealy Product 568
 Connealy Final Product Ebonista of Conanga 471
 SITZ Blackbird 334 Sitz Uncommon
 SITZ Blackbird 532 Sitz Blackbird 6690

CED	BW	WW	YW	CEM	Milk
8	-0.3	75	134	8	17

Profile was aptly named as his progeny possess an attractive, clean fronted look with added extension and a great profile.



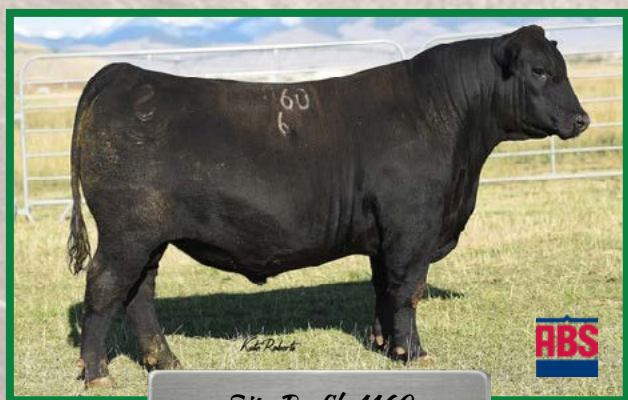
Square B True North 8052

Pine Creek Relevance 0100J

DOB:3/8/2020 Freeze Brand: 0100J Reg # 19951051
 Connealy Confidence Plus Elbanna of Conanga 1209
 Woodhill Relevance Hoover Dam
 Woodhill Blackbird X197-Z7 Woodhill Blackbird U80-X197
 Connealy Final Product
 Sitz Final Product 765a Sitz Pride 88T
 Pine Creek Heritage 1215
 PCAR Lady 5002J PCAR Lady 0221J
 PCAR Lady 3182J

CED	BW	WW	YW	CEM	Milk
3	0.2	53	109	5	44

0100J is a great choice if you are focused on maternal traits. He ranks in the top 15% of the breed for heifer pregnancy, the top 25% of maternal weaned calf value (\$M), and is in the top 1% for milk.



Sitz Profile 1160

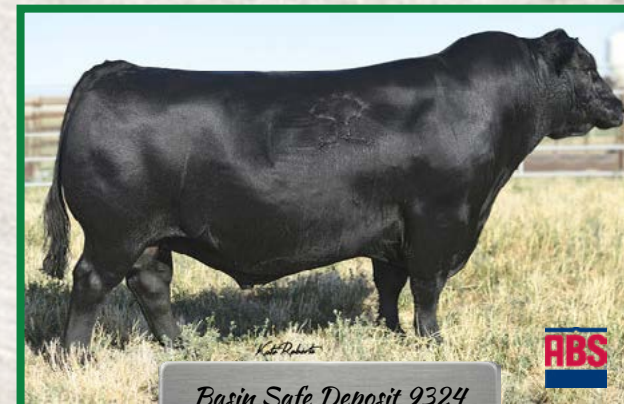
Reference Sires

Pine Creek Relevance 0076

DOB:3/6/2020 Freeze Brand: 0076 Reg # 19951065
 Connealy Confidence Plus Connealy Confidence 0100
 Elbanna of Conanga 1209
 Woodhill Relevance Hoover Dam
 Woodhill Blackbird X197-Z7 Woodhill Blackbird U80-X197
 Sitz Alliance 7544
 KG Alliance 1193 KG Rito Lady 9152
 Mr JT Ribeye 946
 PCAR Ruby 4021 PCAR Ruby 8108
 PCAR Ruby 2281

CED	BW	WW	YW	CEM	Milk
8	-2.3	74	135	3	29

R76 is a heifer bull deluxe. He is a breed leader, in the top 3% for birthweight, top 4% for heifer pregnancy, and in the top 10% marbling, grid value (\$G), beef value (\$B), and combined value (\$C).



Basin Safe Deposit 9324

Brumfield Trail Boss 057

DOB:01/15/2020 Tattoo: 057 Reg # 19755898
 A A R Ten X 7008 S A
 Deer Valley Rita 0308
 V A R Discovery 2240 LD Emblazon 999
 Ferguson Trailblazer 239E Molitor FA Barbella 389-940
 Molitor999 Barbella 940-3012
 Basin Payweight 006S
 Basin Payweight 1682 21AR O Lass 7017
 V A R Reserve 1111
 CAV Lady Payweight 5608-7560 R B Lady Party 167-305
 CAV Lady Reserve 167-5608

CED	BW	WW	YW	CEM	Milk
12	1.0	85	150	13	33

This bull feature is an outcross sire that truly combines outstanding phenotype, pedigree, and performance. Trail Boss brings versatility in matings and has true breed impacting potential.

LAR Man In Black

DOB:1/27/2020 Freeze Brand: 075 Reg # 19955191
 Connealy Consensus 7229
 Eura Elga of Conanga 9109
 Connealy Black Granite Sitz Upward 307R
 Bar R Jet Black 5063 Bar R Anita 7081
 Bar R Iris Anita 0113
 GDAR Game Day 449
 Sitz Pride 88T
 Sitz Top Game 561X Stevenson CE Deluxe 1914
 JMB Maxine TG 2131 JMB Maxine 720
 JMB Maxine Deluxe 9034

CED	BW	WW	YW	CEM	Milk
8	2.8	94	161	9	24

Man In Black combines tremendous base width and muscle with exceptional substance, rib shape, and length of body. He brings unique data and imposing phenotype.

Pine Creek Charm 9212

DOB:03/19/2019 Freeze Brand: 9212 Reg # 19654751
 Silveiras Conversion 8064 BT Crossover 758N
 EXG Saras Dream S609 R3
 BUBS Southern Charm AA31 Connealy Stimulus 8419
 Hickory Hill Erica 009 Hickory Hill Erica TA32
 Connealy Final Product
 Sitz Investment 660Z Sitz Ellunas Elite 656T
 Sitz Greatplains 8102
 PCAR Missy 5134 Pcar Missy 352
 PCAR Missy 6150

CED	BW	WW	YW	CEM	Milk
8	0.7	66	111	7	28

9212 is in the top quarter of the breed in scrotal circumference, heifer pregnancy, pulmonary arterial pressure (PAP), and Angus-on-Jersey \$Values.

Basin Safe Deposit 9324

DOB:2/11/2019 Tattoo: 9324 Reg # 19461028
 Basin Advance 3134 G A R Progress
 Basin O Lass 1663
 Basin Deposit 6249 EXAR Denver 2002B
 Basin Lucy 4288 Basin Lucy 1037
 C F Right Design 1802
 Summitcrest Complete 1P55 Summitcrest Elba 1M17
 Basin Joy 2006 B P F Special Focus 504
 Basin Joy 566T Basin Joy 204R

CED	BW	WW	YW	CEM	Milk
14	-1.4	71	123	18	31

Safe Deposit offers a unique combination of foot quality ranking in the top 1% of the breed in claw and 3% in angle and carcass merit, and ranking in the top 4% of the breed for marbling.

Pine Creek Enhance 1071

DOB: 02/28/2021 Freeze Brand: 1071 Reg # 20271723
 SydGen Enhance SydGen Exceed 3223
 SydGen Rita 2618
 Mr JT Enhance 909 KG Alliance 1193
 Miss JT Alli 740 Miss JT Proud Lady 462
 KG Alliance 1193
 Pine Creek Alliance 5197 PCAR Pride 6064
 PCAR Pride 9259 Sitz New Design 9685
 PCAR Pride 4070 PCAR Pride 5172

CED	BW	WW	YW	CEM	Milk
12	-2.4	46	98	14	47

1071 is a great maternal bull ranking in the top 1% for milk, and with a low birth weight that ranks him in the top 3% of the breed for BW.

Pine Creek Bullseye 9072J

DOB:3/5/2019 Freeze Brand: 9072J Reg # 19653358
 Mogck Bullseye Mogck Mary 1255
 Sitz Bullseye 9994 Sitz Upward 307R
 Sitz Pride 0128 Sitz Pride 2561
 Sitz Triangle S Valubull
 Sitz Valubull 9835 Sitz Miss Burgess 273
 Bon View New Design 878
 PCAR Emma E 8132 PCAR Emma E 1351
 PCAR Emma E 304

CED	BW	WW	YW	CEM	Milk
1	2.5	73	124	10	29

9072J is out of a strong cow family, both his mother and maternal granddam are pathfinder cows we raised. He ranks in the top 20% of the breed in calving ease maternal, and top 30% of the breed for both weaning weight and milk.

Reference Sires

Heiken Broadview



DOB:1/20/2019 Tattoo: 9012 Reg # 19421003

Connealy Spur
Vermilion Spur E119
Vermilion Lass 4071

Connealy Stimulus 8419
Jazza of Conanga 8594
Vermilion Bear Paw
Vermilion Lass 6040

SITZ Logo 12964
JCH BHA Karen 7815
JCH Karen 5130

Sitz Tebow 11860
SITZ Shauna 3152
Sitz Top Seed 539X
J C H Karen 7104

CED	BW	WW	YW	CEM	Milk
10	-0.3	76	135	12	21

Broadview is long bodied, sporting a long level top that carries out through his front and is anchored with a big powerful deep rib cage. He brings style, maternal, performance and end product to the table.

Pine Creek Epic 9128

DOB:3/10/2019 Freeze Brand: 9128 Reg # 19654836

Varilek Product 2010 04
3F Epic 4631
Zebo Queen 1072

Connealy Final Product
Varilek Pearl 0006 014
EF Complement 8088
EXG Blackcap 6247 PPC

Sitz Final Product 765a
PCAR Erica 6082
PCAR Erica 0174

Connealy Final Product
Sitz Pride 88T
Sitz Upward 307R
PCAR Erica 0174

CED	BW	WW	YW	CEM	Milk
4	1.1	80	148	11	30

9128 is an association leader in both weaning weight and yearling weight. He is in the top 15% of the breed for WW, and the top 10% of the breed for YW.

Pine Creek Resilient 1011

DOB:2/10/2021 Freeze Brand: 1011 Reg # 20275262

Sitz Stellar 726D
Sitz Resilient 10208
Sitz Miss Burgess 1856

Mohnen Substantial 272
SITZ Pride 200B
Sitz Top Game 561X
Sitz Miss Burgess 4381

LD Capitalist 316
PCAR Polly 9020
PCAR Polly 2181

Connealy Capitalist 028
LD Dixie Erica 2053
Pine Creek Investment 4213J
PCAR Polly 2181

CED	BW	WW	YW	CEM	Milk
7	.5	67	121	7	32

1011 is a breed leader for excellent feet. He is in the top 4% for Claw and 5% for Angle.

Pine Creek Bullseye 8081J



DOB:03/08/2018 Freeze Brand: 8081J Reg # 19375364

Mogck Bullseye
Sitz Bullseye 9994
Sitz Pride 0128

MOGCK Sure Shot
Mogck Mary 1255
Sitz Upward 307R
Sitz Pride 2561

Sitz Final Product 765a
PCAR Lady 5002J
PCAR Lady 3182J

Connealy Final Product
Sitz Pride 88T
Pine Creek Heritage 1215
PCAR Lady 0221J

CED	BW	WW	YW	CEM	Milk
-6	4.7	76	135	8	29

8081J is out of a pathfinder cow. He ranks in the top 10% for foot angle and carcass weight, in the top 15% in feedlot value (\$F), and combined value (\$C), and in the top 20% maternal weaned calf value (\$M), and beef value (\$B).

Mr. JT Bronc 818



DOB: 02/08/2018 Freeze Brand: 818 Reg # 19089334

EF Commando 1366
Baldrige Bronc
Baldrige Isabel Y69

EF Complement 8088
Riverbend Young Lucy W1470
Styles Upgrade J59
Baldrige Isabel T935

WMR Timeless 458
Miss JT Lady of Time 203
Miss JT Becky 506

Leachman Right Time 338-5605
WMR Blackcap 521
ER Falcon K177
Miss J T Lady of Design 241

CED	BW	WW	YW	CEM	Milk
12	-0.8	57	108	13	26

Bronc is a sleep all night heifer bull. He is in the top 10% of the breed for calving ease maternal, and the top 15% in calving ease direct and birth weight.

Mead Magnitude



DOB:12/4/2015 Tattoo: Q452 Reg # 18543414

Nichols Extra K205
K C F Bennett Southside
K C F Miss 208 S11

Nichols Extra H6
Nichols Black Heiress F346
Bon View New Design 208
K C F Miss 338 P14

Plattemere Weigh Up K360
Mead Primrose N198
Mead Primrose K247

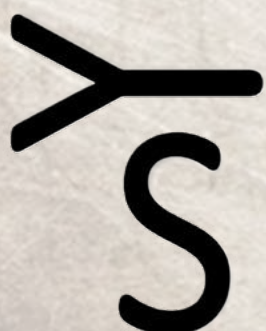
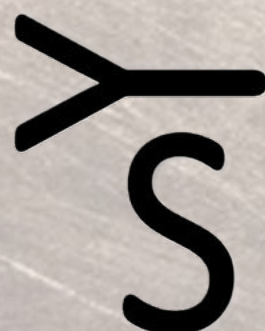
Sitz Upward 307R
Barbara of Plattemere 337
Sitz Alliance 6595
Mead Primrose G329

CED	BW	WW	YW	CEM	Milk
13	-0.4	83	154	17	40

Magnitude is backed by a strong proven cow family with ideal maternal genetics driven by docility, heifer pregnancy, and maternal calving ease.

Additional Sires

- Pine Creek Accomplish 0129 #19951092
- Pine Creek Enhance 1070 #20271718
- Pine Creek Relevance 0102 #19951061
- Pine Creek Resilient 1038J #20275260
- Sitz Resilient 10208 #19057457



1 Pine Creek Accomplish 3260

DOB: 03/07/23 Freeze Brand: 3260 Reg # 20713752

Sitz Accomplishment 720F
Pine Creek Accomplish 0042
PCAR Everelda Entense 8180

Poss Achievement
Sitz Barabamere Nell 166D
Sitz Bullseye 9994
PCAR Everelda Entense 5251

Sitz Final Product 765a
PCAR Henrietta Pride 6045
PCAR Henrietta Pride 7051

Connealy Final Product
Sitz Pride 88T
Connealy Foundation 426
PCAR Henrietta Pride 301

CED	BW	WW	YW	HP	Milk	Marb	RE	\$M	\$B	\$C
4	2.8	77	149	12.8	34	0.78	0.42	40	161	249
Actual BW		Adj 205			Adj 365					
93		741			1315					



Lot 1

2 Pine Creek Accomplish 3329

DOB: 03/12/23 Freeze Brand: 3329 Reg # 20713675

Sitz Accomplishment 720F
Pine Creek Accomplish 0042
PCAR Everelda Entense 8180

Poss Achievement
Sitz Barabamere Nell 166D
Sitz Bullseye 9994
PCAR Everelda Entense 5251

KG High Regard 5087
PCAR Erica Everelda 0348
PCAR Erica Everelda 0184

KG High Regard 2073
KG Princess 3259
Pine Creek Image Maker 7131
PCAR Erica Everelda 6171

CED	BW	WW	YW	HP	Milk	Marb	RE	\$M	\$B	\$C
13	-0.2	67	115	12.5	23	0.64	0.41	65	128	231
Actual BW		Adj 205			Adj 365					
85		628			1020					



Lot 2

3 Pine Creek Accomplish 3332

DOB: 03/12/23 Freeze Brand: 3332 Reg # 20713789

Sitz Accomplishment 720F
Pine Creek Accomplish 0042
PCAR Everelda Entense 8180

Poss Achievement
Sitz Barabamere Nell 166D
Sitz Bullseye 9994
PCAR Everelda Entense 5251

KG High Regard 5087
PCAR Lady Bell 7234
PCAR Lady Bell 2039

KG High Regard 2073
KG Princess 3259
Hoover Dam
PCAR Lady Bell 0203

CED	BW	WW	YW	HP	Milk	Marb	RE	\$M	\$B	\$C
0	3.7	84	158	11.2	21	0.11	0.87	42	144	229
Actual BW		Adj 205			Adj 365					
90		637			1103					

ABOVE AVERAGE GOALS REQUIRE TARGETED BULLS

The Targeting the Brand™ logo highlights registered Angus bulls with greater genetic potential to produce calves that meet the most challenging specifications of the Certified Angus Beef® brand.

Minimum Genetic Requirements

Marbling EPD (Marb)	+0.65
Dollar Grid Carcass Index (\$G)	+55.0



Lot 4

4 Pine Creek Accomplish 3333

DOB: 03/12/23 Freeze Brand: 3333 Reg # 20713839

Sitz Accomplishment 720F
Pine Creek Accomplish 0042
PCAR Everelda Entense 8180

Poss Achievement
Sitz Barabamere Nell 166D
Sitz Bullseye 9994
PCAR Everelda Entense 5251

OCC Active Duty 522
PCAR Eisa Evergreen 9168
PCAR Eisa Evergreen 3208

R B Active Duty 010
OCC Lucy 620
Ideal 9512 of 5570 7814
PCAR Eisa Evergreen 4052

CED	BW	WW	YW	HP	Milk	Marb	RE	\$M	\$B	\$C
8	0.6	72	136	10.9	32	0.34	0.42	45	116	195
Actual BW		Adj 205			Adj 365					
90		652			1118					

5 *Pine Creek Accomplish 3346J* 
 DOB: 03/13/23 Freeze Brand: 3346J Reg # 20713913
 Poss Achievement
 Sitz Accomplishment 720F Sitz Barabamere Nell 166D
Pine Creek Accomplish 0042 Sitz Bullseye 9994
 PCAR Everelda Entense 8180 PCAR Everelda Entense 5251
 Pine Creek Investment 4213J Sitz Investment 660Z
 PCAR Lady Bell 0354
PCAR Beauty 8317 Mr JT High Light 638
 PCAR Beauty 8057 PCAR Beauty 5186

CED	BW	WW	YW	HP	Milk	Marb	RE	\$M	\$B	\$C
7	0.9	63	117	16.6	26	0.93	0.49	68	132	239
Actual BW			Adj 205			Adj 365				
85			654			1096				



11 *Pine Creek True North 3310*
 DOB: 03/10/23 Freeze Brand: 3310 Reg # 20713718
 Coleman Charlo 0256
 S A V Rainfall 6846 S A V Blackcap May 4136
Square B True North 8052 Connealy Consensus
 Elbanna of Conanga 1209 Elbasta of Conanga 9703
 Ideal 5570 of 0452 0534
 Ideal 7814 of 2P88 086
PCAR Everelda Entense 3018 Pine Creek Valubull 8110
 PCAR Everelda Entense 11375 PCAR Everelda Entense 6100

CED	BW	WW	YW	HP	Milk	Marb	RE	\$M	\$B	\$C
3	0.4	70	130	10.3	37	0.66	0.61	63	130	232
Actual BW			Adj 205			Adj 365				
94			811			1293				



6 *Pine Creek Accomplish 3393*
 DOB: 03/17/23 Freeze Brand: 3393 Reg # 20713646
 Poss Achievement
 Sitz Accomplishment 720F Sitz Barabamere Nell 166D
Pine Creek Accomplish 0042 Sitz Bullseye 9994
 PCAR Everelda Entense 8180 PCAR Everelda Entense 5251
 Connealy Confidence Plus
 Woodhill Relevance Woodhill Blackbird X197-Z7
PCAR Missy 0098 Sitz Consensus 12313
 PCAR Missy 6075 PCAR Missy 0235

CED	BW	WW	YW	HP	Milk	Marb	RE	\$M	\$B	\$C
4	2.8	75	132	12.8	31	0.57	0.52	70	135	245
Actual BW			Adj 205			Adj 365				
88			659			1096				

7 *Pine Creek Accomplish 3402*
 DOB: 03/17/23 Freeze Brand: 3402 Reg # 20713790
 Poss Achievement
 Sitz Accomplishment 720F Sitz Barabamere Nell 166D
Pine Creek Accomplish 0042 Sitz Bullseye 9994
 PCAR Everelda Entense 8180 PCAR Everelda Entense 5251
 Sitz Alliance 7544
 KG Alliance 1193 KG Rito Lady 9152
PCAR Lady 7235 Ideal 9512 of 5570 7814
 PCAR Lady 2089 PCAR Lady 6033

CED	BW	WW	YW	HP	Milk	Marb	RE	\$M	\$B	\$C
0	2.9	79	142	12.5	26	0.64	0.79	66	151	262
Actual BW			Adj 205			Adj 365				
96			679			1087				

12 *Pine Creek True North 3275* 
 DOB: 03/09/23 Freeze Brand: 3275 Reg # 20817967
 Coleman Charlo 0256
 S A V Rainfall 6846 S A V Blackcap May 4136
Square B True North 8052 Connealy Consensus
 Elbanna of Conanga 1209 Elbasta of Conanga 9703
 Mogck Bullseye
 Sitz Bullseye 9994 Sitz Pride 0128
PCAR Everelda Entense 8180 Sitz Right Answer 644Y
 PCAR Everelda Entense 5251 PCAR Everelda Entense 2024

CED	BW	WW	YW	HP	Milk	Marb	RE	\$M	\$B	\$C
9	-0.2	74	140	9.4	32	0.91	0.91	53	169	272
Actual BW			Adj 205			Adj 365				
85			706			1236				

13 *Pine Creek True North 3334*
 DOB: 03/12/23 Freeze Brand: 3334 Reg # 20817977
 Coleman Charlo 0256
 S A V Rainfall 6846 S A V Blackcap May 4136
Square B True North 8052 Connealy Consensus
 Elbanna of Conanga 1209 Elbasta of Conanga 9703
 Sitz Alliance 7544
 KG Alliance 1193 KG Rito Lady 9152
PCAR Heather Bloom 8131 Hoover Dam
 PCAR Heather Bloom 3197 PCAR Heather Bloom 5162

CED	BW	WW	YW	HP	Milk	Marb	RE	\$M	\$B	\$C
11	-1	58	105	10.6	37	0.5	0.33	79	104	214
Actual BW			Adj 205			Adj 365				
89			672			1163				

8 *Pine Creek Accomplish 3404*
 DOB: 03/18/23 Freeze Brand: 3404 Reg # 20713743
 Poss Achievement
 Sitz Accomplishment 720F Sitz Barabamere Nell 166D
Pine Creek Accomplish 0042 Sitz Bullseye 9994
 PCAR Everelda Entense 8180 PCAR Everelda Entense 5251
 Ideal 5570 of 0452 0534
 Ideal 9512 of 5570 7814 Ideal 7814 of 2P88 086
PCAR Erica 5138 Sitz Upward 307R
 PCAR Erica 0201 PCAR Erica 0174

CED	BW	WW	YW	HP	Milk	Marb	RE	\$M	\$B	\$C
1	3.1	68	126	11.9	27	0.42	0.45	61	135	236
Actual BW			Adj 205			Adj 365				
96			640			1165				

9 *Pine Creek Accomplish 3414J*
 DOB: 03/19/23 Freeze Brand: 3414J Reg # 20713856
 Poss Achievement
 Sitz Accomplishment 720F Sitz Barabamere Nell 166D
Pine Creek Accomplish 0042 Sitz Bullseye 9994
 PCAR Everelda Entense 8180 PCAR Everelda Entense 5251
 R B Active Duty 010
 OCC Active Duty 522 OCC Lucy 620
PCAR Polly 0024J KG High Regard 5087
 PCAR Polly 8307 PCAR Polly 6166

CED	BW	WW	YW	HP	Milk	Marb	RE	\$M	\$B	\$C
-2	4.1	85	152	12	13	0.46	0.9	35	153	233
Actual BW			Adj 205			Adj 365				
92			722			1080				

14 *Pine Creek True North 3382*
 DOB: 03/15/23 Freeze Brand: 3382 Reg # 20713757
 Coleman Charlo 0256
 S A V Rainfall 6846 S A V Blackcap May 4136
Square B True North 8052 Connealy Consensus
 Elbanna of Conanga 1209 Elbasta of Conanga 9703
 Connealy Consensus 7229
 Sitz Consensus 12313 Sitz Florabelle Fanny 4541
PCAR Missy 6075 Pine Creek High Light 8043
 PCAR Missy 0235 PCAR Missy 0229

CED	BW	WW	YW	HP	Milk	Marb	RE	\$M	\$B	\$C
8	0.2	47	93	14	48	0.51	0.43	65	139	245
Actual BW			Adj 205			Adj 365				
90			618			1026				

SAVE THE DATE

35th Annual Yearling
Spring Bull Sale

April 18, 2025


10 *Pine Creek Accomplish 3419J*
 DOB: 03/20/23 Freeze Brand: 3419J Reg # 20713932
 Poss Achievement
 Sitz Accomplishment 720F Sitz Barabamere Nell 166D
Pine Creek Accomplish 0042 Sitz Bullseye 9994
 PCAR Everelda Entense 8180 PCAR Everelda Entense 5251
 KG Four Star 6107 KG Four Star 3036
 KG Jessi Lynn 4450
PCAR Emma E 9222J Pine Creek Investment 4213J
 PCAR Emma E 7106 PCAR Emma E 7037

CED	BW	WW	YW	HP	Milk	Marb	RE	\$M	\$B	\$C
10	1.9	72	135	9.6	28	0.34	0.43	42	114	190
Actual BW			Adj 205			Adj 365				
90			666			1074				




15 *Pine Creek True North 3389J* 
 DOB: 03/17/23 Freeze Brand: 3389J Reg # 20817937
 Coleman Charlo 0256
 S A V Rainfall 6846 S A V Blackcap May 4136
Square B True North 8052 Connealy Consensus
 Elbanna of Conanga 1209 Elbasta of Conanga 9703
 R B Active Duty 010
 OCC Active Duty 522 OCC Lucy 620
PCAR Starlet 0028J KG High Regard 5087
 PCAR Starlet 8329J PCAR Starlet 6123J

CED	BW	WW	YW	HP	Milk	Marb	RE	\$M	\$B	\$C
10	-0.3	77	130	11	32	0.94	0.78	72	169	291
Actual BW			Adj 205			Adj 365				
86			680			1053				

16 Pine Creek Relevance 3473 
 DOB: 03/30/23 Freeze Brand: 3473 Reg # 20713837
 Woodhill Relevance Connealy Confidence Plus
 Pine Creek Relevance 0100J Woodhill Blackbird X197-Z7
 PCAR Lady 5002J Sitz Final Product 765a
 PCAR Lady 3182J
 KG Alliance 1193
 Pine Creek Alliance 7255 PCAR Pride 3046
 PCAR Pride 9157 Sitz Right Answer 644Y
 PCAR Pride 6310 PCAR Pride 7052

CED	BW	WW	YW	HP	Milk	Marb	RE	\$M	\$B	\$C
4	0.6	57	109	13.6	29	0.74	0.54	58	139	238
Actual BW			Adj 205			Adj 365				
90			682			1133				



17 Pine Creek Relevance 3459 
 DOB: 03/28/23 Freeze Brand: 3459 Reg # 20713829
 Woodhill Relevance Connealy Confidence Plus
 Pine Creek Relevance 0100J Woodhill Blackbird X197-Z7
 PCAR Lady 5002J Sitz Final Product 765a
 PCAR Lady 3182J
 LD Capitalist 316 Connealy Capitalist 028
 PCAR Barbarene Nell 9096 LD Dixie Erica 2053
 PCAR Barbarene Nell 3287 Sitz Right Answer 644Y
 PCAR Barbarene Nell 1290

CED	BW	WW	YW	HP	Milk	Marb	RE	\$M	\$B	\$C
3	1.1	56	99	11.5	36	0.82	0.89	61	136	237
Actual BW			Adj 205			Adj 365				
85			633			1025				

18 Pine Creek Relevance 3460
 DOB: 03/28/23 Freeze Brand: 3460 Reg # 20713847
 Woodhill Relevance Connealy Confidence Plus
 Pine Creek Relevance 0100J Woodhill Blackbird X197-Z7
 PCAR Lady 5002J Sitz Final Product 765a
 PCAR Lady 3182J
 KG High Regard 2073
 KG High Regard 5087 KG Princess 3259
 PCAR Polly 9312 Pine Creek IN Focus 7022
 PCAR Polly 0050 PCAR Polly 6248

CED	BW	WW	YW	HP	Milk	Marb	RE	\$M	\$B	\$C
4	1.2	62	117	15.3	33	0.5	0.43	73	122	231
Actual BW			Adj 205			Adj 365				
88			632			1118				



20 Pine Creek Relevance 3546J
 DOB: 04/11/23 Freeze Brand: 3546J Reg # 20713930
 Woodhill Relevance Connealy Confidence Plus
 Pine Creek Relevance 0100J Woodhill Blackbird X197-Z7
 PCAR Lady 5002J Sitz Final Product 765a
 PCAR Lady 3182J
 KG Four Star 6107 KG Four Star 3036
 PCAR Henrietta Pride 9214J KG Jessi Lynn 4450
 PCAR Henrietta Pride 7076J Pine Creek Investment 4213J
 PCAR Henrietta Pride 1342J

CED	BW	WW	YW	HP	Milk	Marb	RE	\$M	\$B	\$C
2	1.6	56	113	13.8	42	0.75	0.47	73	136	249
Actual BW			Adj 205			Adj 365				
87			667			1177				




21 Pine Creek Summation 3342
 DOB: 03/13/23 Freeze Brand: 3342 Reg # 20713719
 K C F Bennett Summation K C F Bennett Consent Y75
 DL Summation 750 Thomas Patricia 9705
 DL Princess 125 DL Final Grandview 53
 DL Princess 156
 Sitz Right Answer 644Y Connealy Right Answer 746
 Sitz Barbaramere Jet 191W
 Ideal 9512 of 5570 7814
 PCAR Starlet 3023 PCAR Starlet 9149
 PCAR Starlet 1132

CED	BW	WW	YW	HP	Milk	Marb	RE	\$M	\$B	\$C
11	0.1	75	136	8	33	0.22	0.62	58	137	236
Actual BW			Adj 205			Adj 365				
85			579			1177				

23 Pine Creek Summation 3421
 DOB: 03/22/23 Freeze Brand: 3421 Reg # 20713844
 K C F Bennett Summation K C F Bennett Consent Y75
 DL Summation 750 Thomas Patricia 9705
 DL Princess 125 DL Final Grandview 53
 DL Princess 156
 KG High Regard 2073
 KG High Regard 5087 KG Princess 3259
 PCAR Barb Nell 9276 Pine Creek Image Maker 7131
 PCAR Barb Nell 0015 PCAR Barb Nell 8078

CED	BW	WW	YW	HP	Milk	Marb	RE	\$M	\$B	\$C
8	0.7	67	131	10.6	32	0.5	0.95	64	160	272
Actual BW			Adj 205			Adj 365				
88			676			1146				

22 Pine Creek Summation 3418 
 DOB: 03/20/23 Freeze Brand: 3418 Reg # 20713802
 K C F Bennett Summation K C F Bennett Consent Y75
 DL Summation 750 Thomas Patricia 9705
 DL Princess 125 DL Final Grandview 53
 DL Princess 156
 R B Active Duty 010
 OCC Active Duty 522 OCC Lucy 620
 PCAR Eisa Evergreen 8031 Pine Creek Investment 4213J
 PCAR Eisa Evergreen 6331 PCAR Eisa Evergreen 3263


CED	BW	WW	YW	HP	Milk	Marb	RE	\$M	\$B	\$C
8	1.6	65	131	11.7	33	0.73	1.02	71	182	307
Actual BW			Adj 205			Adj 365				
97			608			1123				

24 Pine Creek Summation 3538J
 DOB: 04/10/23 Freeze Brand: 3538J Reg # 20713861
 K C F Bennett Summation K C F Bennett Consent Y75
 DL Summation 750 Thomas Patricia 9705
 DL Princess 125 DL Final Grandview 53
 DL Princess 156
 KG Four Star 6107 KG Four Star 3036
 PCAR Starlet 0079J KG Jessi Lynn 4450
 PCAR Starlet 8215J PCAR High Regard 5087
 PCAR Starlet 6017J

CED	BW	WW	YW	HP	Milk	Marb	RE	\$M	\$B	\$C
9	2.3	80	155	9.7	32	0.36	1.01	66	174	292
Actual BW			Adj 205			Adj 365				
90			662			1168				

19 Pine Creek Relevance 3517J
 DOB: 04/07/23 Freeze Brand: 3517J Reg # 20713921
 Woodhill Relevance Connealy Confidence Plus
 Pine Creek Relevance 0100J Woodhill Blackbird X197-Z7
 PCAR Lady 5002J Sitz Final Product 765a
 PCAR Lady 3182J
 KG Four Star 6107 KG Four Star 3036
 PCAR Missy 9032J KG Jessi Lynn 4450
 PCAR Missy 7111 Sitz Bullseye 9994
 PCAR Missy 1157

CED	BW	WW	YW	HP	Milk	Marb	RE	\$M	\$B	\$C
2	1.6	58	118	11.5	43	0.62	0.78	51	148	243
Actual BW			Adj 205			Adj 365				
93			648			1222				




American Angus Association \$Value Indexes

Maternal Weaned Calf Value (\$M)
 is an index expressed in dollars per head, predicts profitability differences in progeny due to genetics from conception to weaning. \$M is built off of a self-replacing herd model where commercial cattlemen replace 25% of their breeding females in the first generation and 20% in subsequent generations. Remaining cull females and all male progeny are sold as feeder calves. Increased selection pressure on \$M aims to decrease overall mature cow size and improve foot structure and fertility while maintaining weaning weights consistent with today's production.

Beef Value (\$B)
 is an index expressed in dollars per carcass, facilitates simultaneous multi-trait genetic selection for feedlot and carcass merit. \$B represents the expected average differences in the progeny postweaning performance and carcass value compared to progeny of other sires. This index assumes commercial producers wean all male and female progeny, retain ownership of these animals through the feedlot phase and market these animals on a quality-based carcass grid.

Combined Value (\$C)
 is an index expressed in dollars per head, includes all traits that make up both \$M and \$B with the objective that commercial producers will replace 20% of their breeding females per year with replacement heifers retained within their own herd. The remaining cull heifer and steer progeny are then assumed to be sent to the feedlot where the producers retain ownership of those cattle and eventually sell them on a quality-based carcass merit grid.

Dollar value indexes, or \$Values, are a tool used to select for several traits at once based on a specific breeding objective. An economic index approach takes into account genetic and economic values as well as the relationships between traits to select for profit.

25 Pine Creek Profile 3298J 
 DOB: 03/09/23 Freeze Brand: 3298J Reg # 20817949
 Benfield Substance 8506
 Mohnen Substantial 272 Mohnen Glyn Mawr Elba 1758
Sitz Profile 1160 Connealy Final Product
 SITZ Blackbird 334 SITZ Blackbird 532
 S Chisum 6175
 S Blossom 0278
PCAR Special Lady 8181J KG Alliance 1193
 PCAR Special Lady 5270J PCAR Special Lady 2031J

CED	BW	WW	YW	HP	Milk	Marb	RE	\$M	\$B	\$C
10	0.1	73	128	16	27	0.9	0.43	72	146	261
Actual BW			Adj 205			Adj 365				
87			696			1128				



Lot 25

31 Pine Creek Charm 3548
 DOB: 04/11/23 Freeze Brand: 3548 Reg # 20713778
 Silveiras Conversion 8064
 BUBS Southern Charm AA31 Hickory Hill Erica 009
Pine Creek Charm 9212 Sitz Investment 660Z
 PCAR Missy 5134 PCAR Missy 6150
 S Chisum 6175
 S Blossom 0278
PCAR Everelda Entense 7136 Sitz Valubull 9835
 PCAR Everelda Entense 8105 PCAR Everelda Entense 2243

CED	BW	WW	YW	HP	Milk	Marb	RE	\$M	\$B	\$C
11	1.6	72	127	13.8	27	0.74	0.42	68	145	256
Actual BW			Adj 205			Adj 365				
91			757			1218				

THE INDUSTRY STANDARD NOW HAS HIGHER STANDARDS.
 Next Generation Genetic Testing For Best Generation Angus.
FOR ANGUS. BY ANGUS.
ANGUSGS
 Powered by Neogen

26 Pine Creek Profile 3287J
 DOB: 03/09/23 Freeze Brand: 3287J Reg # 20817945
 Benfield Substance 8506
 Mohnen Substantial 272 Mohnen Glyn Mawr Elba 1758
Sitz Profile 1160 Connealy Final Product
 SITZ Blackbird 334 SITZ Blackbird 532
 Mogck Bullseye
 Sitz Bullseye 9994 Sitz Pride 0128
PCAR Mae 9108J Sitz Final Product 765a
 PCAR Mae 5122J PCAR Mae 0218J

CED	BW	WW	YW	HP	Milk	Marb	RE	\$M	\$B	\$C
13	-2.6	74	131	14.4	21	0.61	0.29	68	136	244
Actual BW			Adj 205			Adj 365				
72			650			1120				

27 Pine Creek Profile 3308J
 DOB: 03/10/23 Freeze Brand: 3308J Reg # 20817943
 Benfield Substance 8506
 Mohnen Substantial 272 Mohnen Glyn Mawr Elba 1758
Sitz Profile 1160 Connealy Final Product
 SITZ Blackbird 334 SITZ Blackbird 532
 KG Four Star 3036
 KG Jessi Lynn 4450
PCAR Emma E 9220J OCC Active Duty 522
 PCAR Emma E 7007 PCAR Emma E 5149

CED	BW	WW	YW	HP	Milk	Marb	RE	\$M	\$B	\$C
7	1	70	117	17	23	0.42	0.3	81	124	242
Actual BW			Adj 205			Adj 365				
88			733			1106				

32 Pine Creek Charm 3558J
 DOB: 04/14/23 Freeze Brand: 3558J Reg # 20713898
 Silveiras Conversion 8064
 BUBS Southern Charm AA31 Hickory Hill Erica 009
Pine Creek Charm 9212 Sitz Investment 660Z
 PCAR Missy 5134 PCAR Missy 6150
 R B Active Duty 010
 OCC Active Duty 522 OCC Lucy 620
PCAR Starlet 7223J KG Alliance 1193
 PCAR Starlet 4239J PCAR Starlet 45J

CED	BW	WW	YW	HP	Milk	Marb	RE	\$M	\$B	\$C
1	2.8	69	113	12.8	30	0.51	0.54	58	133	231
Actual BW			Adj 205			Adj 365				
90			739			1176				

33 Pine Creek Charm 3581J
 DOB: 04/21/23 Freeze Brand: 3581J Reg # 20713888
 Silveiras Conversion 8064
 BUBS Southern Charm AA31 Hickory Hill Erica 009
Pine Creek Charm 9212 Sitz Investment 660Z
 PCAR Missy 5134 PCAR Missy 6150
 R B Active Duty 010
 OCC Active Duty 522 OCC Lucy 620
PCAR Emma E 7007 Sitz Final Product 765a
 PCAR Emma E 5149 PCAR Emma E 2149

CED	BW	WW	YW	HP	Milk	Marb	RE	\$M	\$B	\$C
3	3.9	82	137	14.9	32	0.4	0.91	53	162	263
Actual BW			Adj 205			Adj 365				
94			672			1085				

28 Pine Creek Relevance 3413 
 DOB: 03/19/23 Freeze Brand: 3413 Reg # 20713750
 Connealy Confidence Plus
 Woodhill Relevance Woodhill Blackbird X197-Z7
Pine Creek Relevance 0076 KG Alliance 1193
 PCAR Ruby 4021 PCAR Ruby 2281
 Sitz Alliance 7544
 KG Rito Lady 9152
PCAR Missy 6028 Sitz Right Answer 644Y
 PCAR Missy 4124 PCAR Missy 5005

CED	BW	WW	YW	HP	Milk	Marb	RE	\$M	\$B	\$C
2	1.1	75	138	18.1	34	0.89	0.71	66	179	298
Actual BW			Adj 205			Adj 365				
90			685			1162				




Lot 28




Lot 34

34 PineCreek Safe Deposit 3216J
 DOB: 02/13/23 Freeze Brand: 3216J Reg # 20817936
 Basin Advance 3134
 Basin Deposit 6249 Basin Lucy 4288
Basin Safe Deposit 9324 Summitcrest Complete 1P55
 Basin Joy 2006 Basin Joy 566T
 Mogck Bullseye
 Sitz Bullseye 9994 Sitz Pride 0128
PCAR Lacey 1276J Ideal 9512 of 5570 7814
 PCAR Lacey 1111J PCAR Lacey 9007J

CED	BW	WW	YW	HP	Milk	Marb	RE	\$M	\$B	\$C
11	-1.1	67	119	6.8	39	0.71	0.4	59	132	230
Actual BW			Adj 205			Adj 365				
80			709			1205				

29 Pine Creek Relevance 3303J 
 DOB: 03/10/23 Freeze Brand: 3303J Reg # 20713903
 Connealy Confidence Plus
 Woodhill Relevance Woodhill Blackbird X197-Z7
Pine Creek Relevance 0076 KG Alliance 1193
 PCAR Ruby 4021 PCAR Ruby 2281
 WMR Timeless 458
 Pine Creek Timeless 2109 PCAR Doll 8215
PCAR Polly 8138 Pine Creek Dateline 5133
 PCAR Polly 8260 PCAR Polly 1284

CED	BW	WW	YW	HP	Milk	Marb	RE	\$M	\$B	\$C
6	1.2	69	116	18.2	26	0.95	0.28	66	154	266
Actual BW			Adj 205			Adj 365				
85			693			1189				

30 Pine Creek Relevance 3325J 
 DOB: 03/11/23 Freeze Brand: 3325J Reg # 20713859
 Connealy Confidence Plus
 Woodhill Relevance Woodhill Blackbird X197-Z7
Pine Creek Relevance 0076 KG Alliance 1193
 PCAR Ruby 4021 PCAR Ruby 2281
 KG Four Star 3036
 KG Jessi Lynn 4450
PCAR Elsiemere 0065J KG High Regard 5087
 PCAR Elsiemere 8119 PCAR Elsiemere 6055

CED	BW	WW	YW	HP	Milk	Marb	RE	\$M	\$B	\$C
0	0.7	85	149	20.1	38	0.77	0.76	67	182	303
Actual BW			Adj 205			Adj 365				
89			727			1169				

35 PineCreek Safe Deposit 3212J
 DOB: 02/13/23 Freeze Brand: 3212J Reg # 20817891
 Basin Advance 3134
 Basin Deposit 6249 Basin Lucy 4288
Basin Safe Deposit 9324 Summitcrest Complete 1P55
 Basin Joy 2006 Basin Joy 566T
 Basin Payweight 1682
 K C F Bennett Constitution K C F Miss Homestead C452
PCAR Henrietta Pride 1021J OCC Active Duty 522
 PCAR Henrietta Pride 9098 PCAR Henrietta Pride 3117

CED	BW	WW	YW	HP	Milk	Marb	RE	\$M	\$B	\$C
6	1.4	77	124	11.6	33	0.73	0.37	67	141	250
Actual BW			Adj 205			Adj 365				
84			732			1174				

Semen For Sale

- Basin Keystone 2021
- GA Comet 452
- Pine Creek Investment 4213J
- Pine Creek Relevance 0076
- Pine Creek Right Time 1147
- Sitz Bullseye 9994
- Sitz Traveler 8180

36 Pine Creek Trail Boss 3288J

DOB: 03/09/23 Freeze Brand: 3288J Reg # 20817955
 Ferguson Trailblazer 239E V A R Discovery 2240
 Brumfield Trail Boss 057 Molitor999 Barbella 940-3012
 CAV Lady Payweight 5608-7560 Basin Payweight 1682
 CAV Lady Reserve 167-5608
 S Chisum 6175
 S Blossom 0278
 PCAR Lady of Vision 9026J Sitz Bullseye 9994
 PCAR Lady of Vision 7202J PCAR Lady of Vision 4030J

CED	BW	WW	YW	HP	Milk	Marb	RE	\$M	\$B	\$C
8	0.9	81	128	16.4	25	0.96	0.6	84	154	284
Actual BW			Adj 205				Adj 365			
85			706				1074			



Lot 36



40 Pine Creek Man In Black 3409

DOB: 03/18/23 Freeze Brand: 3409 Reg # 20713661
 Bar R Jet Black 5063 Connealy Black Granite
 Bar R Iris Anita 0113
 LAR Man In Black Sitz Top Game 561X
 JMB Maxine TG 2131 JMB Maxine Deluxe 9034
 Sitz Accomplishment 720F Poss Achievement
 Sitz Barbamere Nell 166D
 PCAR Everelda Entense 0246 S Chisum 255
 PCAR Everelda Entense 77186 PCAR Everelda Entense 3018

CED	BW	WW	YW	HP	Milk	Marb	RE	\$M	\$B	\$C
10	1.8	75	133	14.3	31	0.55	0.74	86	160	294
Actual BW			Adj 205				Adj 365			
90			662				1118			



Lot 41

37 Pine Creek Trail Boss 3388J

DOB: 03/15/23 Freeze Brand: 3388J Reg # 20817985
 Ferguson Trailblazer 239E V A R Discovery 2240
 Brumfield Trail Boss 057 Molitor999 Barbella 940-3012
 CAV Lady Payweight 5608-7560 Basin Payweight 1682
 CAV Lady Reserve 167-5608
 Sitz Alliance 7544
 KG Rito Lady 9152
 KG Alliance 1193 Mr JT Ribeye 946
 PCAR Lady 5277J PCAR Lady 7227J
 PCAR Lady 1261J

CED	BW	WW	YW	HP	Milk	Marb	RE	\$M	\$B	\$C
12	0.4	69	121	18	30	0.98	0.58	62	150	257
Actual BW			Adj 205				Adj 365			
87			685				1093			



38 Pine Creek Enhance 3450J

DOB: 03/26/23 Freeze Brand: 3450J Reg # 20713907
 Mr JT Enhance 909 SydGen Enhance
 Miss JT Alli 740
 Pine Creek Enhance 1071 Pine Creek Alliance 5197
 PCAR Pride 9259 PCAR Pride 4070
 Connealy Arsenal 2174
 Pine Creek Arsenal 6088 PCAR Missy 0251
 Mr JT Ribeye 946
 PCAR Starlet 8240 PCAR Starlet 5084
 PCAR Starlet 1171

CED	BW	WW	YW	HP	Milk	Marb	RE	\$M	\$B	\$C
8	-0.1	47	99	12.9	43	0.9	0.06	51	118	204
Actual BW			Adj 205				Adj 365			
85			1103							

39 Pine Creek Enhance 3486

DOB: 04/02/23 Freeze Brand: 3486 Reg # 20713809
 Mr JT Enhance 909 SydGen Enhance
 Miss JT Alli 740
 Pine Creek Enhance 1071 Pine Creek Alliance 5197
 PCAR Pride 9259 PCAR Pride 4070
 S Chisum 6175
 S Blossom 0278
 WMR Timeless 458
 PCAR Lady 8080 PCAR Lady 4146
 PCAR Lady 2182

CED	BW	WW	YW	HP	Milk	Marb	RE	\$M	\$B	\$C
9	-0.2	60	116	10.3	35	0.56	0.46	70	139	250
Actual BW			Adj 205				Adj 365			
90			681				1163			



1. Log into CattleUSA.com
2. Push the Buyer Approval button next to the auction you wish to be approved at. Fill out your information then push the button at the bottom of the form to continue.
3. You have now sent your information to that auction. The auction will now be able to approve you to buy.
 - Auctions do not have access to your information until you send it to them.

41 Pine Creek Bullseye 3534

DOB: 04/09/23 Freeze Brand: 3534 Reg # 20713796
 Sitz Bullseye 9994 Mogck Bullseye
 Sitz Pride 0128
 Pine Creek Bullseye 9072J Sitz Valubull 9835
 PCAR Emma E 8132 PCAR Emma E 304
 Sitz Investment 660Z
 Pine Creek Investment 4213J PCAR Lady Bell 0354
 PCAR Ruby 7313 Mr JT Ribeye 946
 PCAR Ruby 2281 PCAR Ruby 8108

CED	BW	WW	YW	HP	Milk	Marb	RE	\$M	\$B	\$C
1	2	61	107	11.2	27	0.51	0	45	92	164
Actual BW			Adj 205				Adj 365			
94			668				1046			

DVAuction

Broadcasting Real-Time Auctions

Never Miss An Auction Again!
Watch & Bid online for FREE!

Visit www.DVAuction.com and Register Today!

For General Questions Please Contact Our Office:
(402) 316-5460 or support@dvauction.com

A.I. Reference Sire



Basin Keystone 2021

Keystone spent his summer here at the ranch, but is now back in Montana being collected at World West Sire Services. His semen and sexed semen is available through both Origin Beef and ABS Global. Keystone is an outstanding bull that exemplifies the Angus breed.

CED	BW	WW	YW	HP	CEM	Milk	Doc	Claw	Angle	Pap	Marb	RE
7	.8	82	148	13.4	15	32	25	.38	.38	-2.11	1.67	1.02
\$M	\$F	\$B	\$W	\$G	\$C							
86	116	220	84	104	371							

Basin Keystone 2021

DOB: 01/11/22 Tattoo: 2021 Reg # 20322583

G A R Big Step K715
EZAR Step Up 9178
 Basin Lucy 4261


EXAR Monumental 6056B
Basin Joy 9140
 Basin Joy 5367

G A R Sure Fire
 Chair Rock Prophet 3131
 EXAR Denver 2002B
 Basin Lucy 1002

3F Epic 4631
 FWY 7008 of C085 4029
 Basin Rainmaker P175
 Basin Joy 1036

Clean Up Sires

- **Pine Creek True North 3175 #20713688**
- **Pine Creek Safe Deposit 3179 #20817923**
- **Pine Creek Safe Deposit 3228 #20817917**
- **Pine Creek Profile 3287J #20817945**


101 Pine Creek Barbarmere 3167 
 DOB: 02/08/23 Freeze Brand: 3167 Reg # 20713686

Vermilion Spur E119 Connealy Spur
 Vermilion Lass 4071
Heiken Broadview SITZ Logo 12964
 JCH BHA Karen 7815 JCH Karen 5130

Sitz Resilient 10208 Sitz Stellar 726D
 Sitz Miss Burgess 1856
PCAR Barbarmere Nell 1098 SydGen C C & 7
 PCAR Barbarmere Nell 1204 PCAR Barbarmere Nell 6050

CED	BW	WW	YW	HP	Milk	Marb	RE	\$M	\$B	\$C
2	3	86	158	17.3	26	1.1	0.98	74	191	322
Actual BW	Adj 205	Adj 365								
78	617	836								

A.I. Bred to Basin Keystone 2021 Due Date: 02/08/25


103 Pine Creek Erica 3274 
 DOB: 03/09/23 Freeze Brand: 3274 Reg # 20817966

Ferguson Trailblazer 239E V A R Discovery 2240
 Molitor999 Barbella 940-3012
Brumfield Trail Boss 057 Basin Payweight 1682
 CAV Lady Payweight 5608-7560 CAV Lady Reserve 167-5608

OCC Active Duty 522 R B Active Duty 010
 OCC Lucy 620
PCAR Erica 8157 HF Thunderbird 146Y
 PCAR Erica 5047 PCAR Erica 8134

CED	BW	WW	YW	HP	Milk	Marb	RE	\$M	\$B	\$C
8	2.5	81	147	18.2	33	0.84	0.65	56	159	262
Actual BW	Adj 205	Adj 365								
92	634	959								

A.I. Bred to Basin Keystone 2021 Due Date: 02/08/25


105 Pine Creek Ellie Elite 3284 
 DOB: 03/09/23 Freeze Brand: 3284 Reg # 20713840

Woodhill Relevance Connealy Confidence Plus
 Woodhill Blackbird X197-Z7
Pine Creek Relevance 0076 KG Alliance 1193
 PCAR Ruby 4021 PCAR Ruby 2281

Sitz Bullseye 9994 Mogck Bullseye
 Sitz Pride 0128
PCAR Ellie Elite 9191 Pine Creek Heritage 1215
 PCAR Ellie Elite 6296 PCAR Ellie Elite 1136

CED	BW	WW	YW	HP	Milk	Marb	RE	\$M	\$B	\$C
8	-0.9	87	146	19.7	26	0.78	1.04	91	179	323
Actual BW	Adj 205	Adj 365								
75	617	948								

A.I. Bred to Basin Keystone 2021 Due Date: 02/08/25


107 Pine Creek Barbarmere 3299 
 DOB: 03/09/23 Freeze Brand: 3299 Reg # 20713666

Woodhill Relevance Connealy Confidence Plus
 Woodhill Blackbird X197-Z7
Pine Creek Relevance 0076 KG Alliance 1193
 PCAR Ruby 4021 PCAR Ruby 2281

Pine Creek Chisum 7008 S Chisum 255
 PCAR Henrietta Pride 5040
PCAR Barbarmere Nell 0287 Sitz Dash 10277
 PCAR Barbarmere Nell 1290 PCAR Barbarmere Nell 5039

CED	BW	WW	YW	HP	Milk	Marb	RE	\$M	\$B	\$C
-2	2.3	77	136	15.6	22	0.4	1.14	71	154	271
Actual BW	Adj 205	Adj 365								
90	616	947								

A.I. Bred to Basin Keystone 2021 Due Date: 02/08/25


102 Pine Creek Barb Nell 3186 
 DOB: 02/08/23 Freeze Brand: 3186 Reg # 20713693

Basin Deposit 6249 Basin Advance 3134
 Basin Lucy 4288
Basin Safe Deposit 9324 Summitcrest Complete 1P55
 Basin Joy 2006 Basin Joy 566T

LD Capitalist 316 Connealy Capitalist 028
 LD Dixie Erica 2053
PCAR Barb Nell 1164 Sitz Bullseye 9994
 PCAR Barb Nell 7294 PCAR Barb Nell 0015

CED	BW	WW	YW	HP	Milk	Marb	RE	\$M	\$B	\$C
20	-3.6	61	106	10.6	27	0.72	0.41	80	140	262
Actual BW	Adj 205	Adj 365								
54	514	757								

A.I. Bred to Basin Keystone 2021 Due Date: 02/08/25


104 Pine Creek Erica 3279 
 DOB: 03/09/23 Freeze Brand: 3279 Reg # 20713769

Sitz Accomplishment 720F Poss Achievement
 Sitz Barbarmere Nell 166D
Pine Creek Accomplish 0042 Sitz Bullseye 9994
 PCAR Everelda Entense 8180 PCAR Everelda Entense 5251

Sitz Final Product 765a Connealy Final Product
 Sitz Pride 88T
PCAR Erica 6311 WMR Timeless 458
 PCAR Erica 2064 PCAR Erica 8134

CED	BW	WW	YW	HP	Milk	Marb	RE	\$M	\$B	\$C
11	0.8	72	125	18.9	25	0.35	0.83	76	137	254
Actual BW	Adj 205	Adj 365								
72	589	802								

A.I. Bred to Basin Keystone 2021 Due Date: 02/08/25

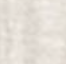
106 Pine Creek Barb Nell 3297 
 DOB: 03/09/23 Freeze Brand: 3297 Reg # 20713644

Sitz Accomplishment 720F Poss Achievement
 Sitz Barbarmere Nell 166D
Pine Creek Accomplish 0042 Sitz Bullseye 9994
 PCAR Everelda Entense 8180 PCAR Everelda Entense 5251

KG Four Star 6107 KG Four Star 3036
 KG Jessi Lynn 4450
PCAR Barb Nell 0096 Sitz Bullseye 9994
 PCAR Barb Nell 8222 PCAR Barb Nell 0015

CED	BW	WW	YW	HP	Milk	Marb	RE	\$M	\$B	\$C
6	3.7	88	150	11.7	28	0.37	0.16	61	128	227
Actual BW	Adj 205	Adj 365								
75	581	781								

A.I. Bred to Basin Keystone 2021 Due Date: 02/08/25

108 Pine Creek Missy 3312 
 DOB: 03/10/23 Freeze Brand: 3312 Reg # 20859975

Ferguson Trailblazer 239E V A R Discovery 2240
 Molitor999 Barbella 940-3012
Brumfield Trail Boss 057 Basin Payweight 1682
 CAV Lady Payweight 5608-7560 CAV Lady Reserve 167-5608

Sitz Investment 660Z Connealy Final Product
 Sitz Ellunas Elite 656T
PCAR Missy 4089 Sitz Greatplains 8102
 PCAR Missy 6150 Pcar Missy 352

CED	BW	WW	YW	HP	Milk	Marb	RE	\$M	\$B	\$C
3	3.4	80	145	12.2	29	0.61	0.23	42	159	248
Actual BW	Adj 205	Adj 365								
93	611	848								

A.I. Bred to Basin Keystone 2021 Due Date: 02/08/25

109 Pine Creek Beauty 3316J

DOB: 03/10/23 Freeze Brand: 3316J Reg # 20713891
Poss Achievement
Sitz Accomplishment 720F Sitz Barbaramere Nell 166D
Pine Creek Accomplish 0042 Sitz Bullseye 9994
PCAR Everelda Entense 8180 PCAR Everelda Entense 5251
KG Alliance 1193 Sitz Alliance 7544
PCAR Beauty 7044 Mr Rito Lady 9152
PCAR Beauty 8057 Mr JT High Light 638
PCAR Beauty 5186

Table with columns: CED, BW, WW, YW, HP, Milk, Marb, RE, \$M, \$B, \$C. Row 1: 8, -0.3, 66, 123, 17.4, 33, 0.58, 0.46, 64, 135, 239. Actual BW: 79, Adj 205: 642, Adj 365: 930.

A.I. Bred to Basin Keystone 2021 Due Date: 02/08/25

110 Pine Creek Elsiemere 3323

DOB: 03/11/23 Freeze Brand: 3323 Reg # 20713770
Poss Achievement
Sitz Accomplishment 720F Sitz Barbaramere Nell 166D
Pine Creek Accomplish 0042 Sitz Bullseye 9994
PCAR Everelda Entense 8180 PCAR Everelda Entense 5251
Pine Creek Heritage 1215 SydGen C C & 7
PCAR Elsiemere 6327 PCAR Barb Nell 5027
PCAR Elsiemere 0109 Pine Creek Power Design 7277
PCAR Elsiemere 8027

Table with columns: CED, BW, WW, YW, HP, Milk, Marb, RE, \$M, \$B, \$C. Row 1: 3, 3.6, 81, 137, 10.9, 21, 0.86, 0.55, 50, 147, 241. Actual BW: 90, Adj 205: 649, Adj 365: 905.

A.I. Bred to Basin Keystone 2021 Due Date: 02/08/25

117 Pine Creek Blackcap 3445

DOB: 03/26/23 Freeze Brand: 3445 Reg # 20713787
K C F Bennett Summation K C F Bennett Consent Y75
DL Summation 750 Thomas Patricia 9705
DL Princess 125 DL Final Grandview 53
DL Princess 156 DL Princess 156
Mogck Bullseye
Sitz Bullseye 9994 Sitz Pride 0128
PCAR Blackcap 7220 Mr JT Ribeye 946
PCAR Blackcap 3309 PCAR Blackcap 5075

Table with columns: CED, BW, WW, YW, HP, Milk, Marb, RE, \$M, \$B, \$C. Row 1: 10, 1.4, 66, 118, 8.8, 34, 0.77, 0.85, 44, 147, 235. Actual BW: 93, Adj 205: 670, Adj 365: 1006.

A.I. Bred to Basin Keystone 2021 Due Date: 02/08/25

118 Pine Creek Barbaramere 3488

DOB: 04/02/23 Freeze Brand: 3488 Reg # 20713828
Sitz Resilient 10208 Sitz Stellar 726D
Pine Creek Resilient 1038J Sitz Miss Burgess 1856
PCAR Mae 9146J LD Capitalist 316
PCAR Mae 4227J
R B Active Duty 010
OCC Active Duty 522 OCC Lucy 620
PCAR Barbaramere Nell 9094 Sitz Dash 10277
PCAR Barbaramere Nell 1290 PCAR Barbaramere Nell 5039

Table with columns: CED, BW, WW, YW, HP, Milk, Marb, RE, \$M, \$B, \$C. Row 1: 3, 1.9, 61, 99, 13.3, 34, 0.72, 0.52, 74, 130, 243. Actual BW: 85, Adj 205: 586, Adj 365: 869.

A.I. Bred to Basin Keystone 2021 Due Date: 02/08/25

111 Pine Creek Eisa E 3339

DOB: 03/12/23 Freeze Brand: 3339 Reg # 20713771
Poss Achievement
Sitz Accomplishment 720F Sitz Barbaramere Nell 166D
Pine Creek Accomplish 0042 Sitz Bullseye 9994
PCAR Everelda Entense 8180 PCAR Everelda Entense 5251
Sitz Investment 660Z
Pine Creek Investment 4213J PCAR Lady Bell 0354
PCAR Eisa Evergreen 6331 Mr JT Ribeye 946
PCAR Eisa Evergreen 3263 PCAR Eisa Evergreen 5204

Table with columns: CED, BW, WW, YW, HP, Milk, Marb, RE, \$M, \$B, \$C. Row 1: 1, 3.3, 83, 150, 10.3, 28, 0.62, 0.88, 56, 160, 264. Actual BW: 87, Adj 205: 600, Adj 365: 813.

A.I. Bred to Basin Keystone 2021 Due Date: 02/08/25

112 Pine Creek Starlet 3352

DOB: 03/13/23 Freeze Brand: 3352 Reg # 20713776
Poss Achievement
Sitz Accomplishment 720F Sitz Barbaramere Nell 166D
Pine Creek Accomplish 0042 Sitz Bullseye 9994
PCAR Everelda Entense 8180 PCAR Everelda Entense 5251
WMR Timeless 458
Pine Creek Timeless 2109 PCAR Doll 8215
PCAR Starlet 7121 Mytty In Focus
PCAR Starlet 8020 PCAR Starlet 6168

Table with columns: CED, BW, WW, YW, HP, Milk, Marb, RE, \$M, \$B, \$C. Row 1: 8, 2.1, 62, 114, 13.4, 21, 0.35, 0.68, 58, 115, 207. Actual BW: 85, Adj 205: 608, Adj 365: 909.

A.I. Bred to Basin Keystone 2021 Due Date: 02/08/25

119 Pine Creek Missy 3536

DOB: 04/09/23 Freeze Brand: 3536 Reg # 20713714
Mogck Bullseye
Sitz Bullseye 9994 Sitz Pride 0128
Pine Creek Bullseye 8081J Sitz Final Product 765a
PCAR Lady 5002J PCAR Lady 3182J
Mytty In Focus
Pine Creek IN Focus 7022 PCAR Everelda Entense 5051
PCAR Missy 2207 Mr JT Power Design 4109
PCAR Missy 7080 PCAR Missy 5049

Table with columns: CED, BW, WW, YW, HP, Milk, Marb, RE, \$M, \$B, \$C. Row 1: -1, 3.6, 68, 120, 9.1, 30, 0.49, 0.5, 74, 138, 253. Actual BW: 90, Adj 205: 608, Adj 365: 798.

A.I. Bred to Basin Keystone 2021 Due Date: 02/08/25

120 Pine Creek Ruby 3567

DOB: 04/17/23 Freeze Brand: 3567 Reg # 20713715
Mogck Bullseye
Sitz Bullseye 9994 Sitz Pride 0128
Pine Creek Bullseye 8081J Sitz Final Product 765a
PCAR Lady 5002J PCAR Lady 3182J
Stevenson Cattleman R142
Mr JT Ribeye 946 Miss JT Bandie 345
PCAR Ruby 2281 Sitz Valubull 9835
PCAR Ruby 8108 PCAR Ruby 0114

Table with columns: CED, BW, WW, YW, HP, Milk, Marb, RE, \$M, \$B, \$C. Row 1: 4, 2.4, 56, 94, 14.3, 34, 0.82, 0.27, 82, 137, 260. Actual BW: 82, Adj 205: 541, Adj 365: 795.

A.I. Bred to Basin Keystone 2021 Due Date: 02/08/25

113 Pine Creek Barbaramere 3354

DOB: 03/13/23 Freeze Brand: 3354 Reg # 20817853
Mohnen Substantial 272
Sitz Stellar 726D SITZ Pride 200B
Sitz Resilient 10208 Sitz Top Game 561X
Sitz Miss Burgess 1856 Sitz Miss Burgess 4381
Connealy Confidence Plus
Woodhill Relevance Woodhill Blackbird X197-27
PCAR Barbaramere Nell 0257 SydGen C C & 7
PCAR Barbaramere Nell 1204 PCAR Barbaramere Nell 6050

Table with columns: CED, BW, WW, YW, HP, Milk, Marb, RE, \$M, \$B, \$C. Row 1: -3, 3.3, 85, 152, 17, 25, 0.96, 0.83, 74, 191, 322. Actual BW: 74, Adj 205: 655, Adj 365: 898.

A.I. Bred to Basin Keystone 2021 Due Date: 02/08/25

114 Pine Creek Henrietta 3364

DOB: 03/15/23 Freeze Brand: 3364 Reg # 20713785
K C F Bennett Summation K C F Bennett Consent Y75
DL Summation 750 Thomas Patricia 9705
DL Princess 125 DL Final Grandview 53
DL Princess 156 DL Princess 156
R B Active Duty 010
OCC Active Duty 522 OCC Lucy 620
PCAR Henrietta Pride 7212 Pine Creek Heritage 1215
PCAR Henrietta Pride 3249 PCAR Henrietta Pride 7070

Table with columns: CED, BW, WW, YW, HP, Milk, Marb, RE, \$M, \$B, \$C. Row 1: 1, 4.9, 80, 144, 8.9, 27, 0.32, 1.01, 38, 164, 251. Actual BW: 93, Adj 205: 679, Adj 365: 985.

A.I. Bred to Basin Keystone 2021 Due Date: 02/08/25

121 Pine Creek Barbaramere 3569

DOB: 04/18/23 Freeze Brand: 3569 Reg # 20713729
Silveiras Conversion 8064
BUBS Southern Charm AA31 Hickory Hill Erica 009
Pine Creek Charm 9212 Sitz Investment 660Z
PCAR Missy 5134 PCAR Missy 6150
Connealy Right Answer 746
Sitz Right Answer 644Y Sitz Barbaramere Jet 191W
PCAR Barbaramere Nell 3287 Sitz Dash 10277
PCAR Barbaramere Nell 1290 PCAR Barbaramere Nell 5039

Table with columns: CED, BW, WW, YW, HP, Milk, Marb, RE, \$M, \$B, \$C. Row 1: 3, 1.8, 72, 110, 14.3, 24, 0.65, 0.66, 61, 139, 241. Actual BW: 80, Adj 205: 593, Adj 365: 779.

A.I. Bred to Basin Keystone 2021 Due Date: 02/08/25

122 Pine Creek Erica 3158

DOB: 02/05/23 Freeze Brand: 3158 Reg # 20713677
Connealy Spur
Vermilion Spur E119 Vermilion Lass 4071
Heiken Broadview SITZ Logo 12964
JCH BHA Karen 7815 JCH Karen 5130
Sitz Stellar 726D
Sitz Resilient 10208 Sitz Miss Burgess 1856
PCAR Erica 1009 BUBS Southern Charm AA31
PCAR Erica 9147 PCAR Erica 5166

Table with columns: CED, BW, WW, YW, HP, Milk, Marb, RE, \$M, \$B, \$C. Row 1: 9, 0.1, 85, 143, 13.2, 22, 0.76, 0.91, 95, 145, 283. Actual BW: 60, Adj 205: 602, Adj 365: 821.

Bull Bred Due Date: 02/26/25

115 Pine Creek Starlet 3392

DOB: 03/17/23 Freeze Brand: 3392 Reg # 20817987
V A R Discovery 2240
Ferguson Trailblazer 239E Molitor999 Barbella 940-3012
Brumfield Trail Boss 057 Basin Payweight 1682
CAV Lady Payweight 5608-7560 CAV Lady Reserve 167-5608
Connealy Final Product
Sitz Final Product 765a Sitz Pride 88T
PCAR Starlet 5024 Ideal 9512 of 5570 7814
PCAR Starlet 3104 PCAR Starlet 0162

Table with columns: CED, BW, WW, YW, HP, Milk, Marb, RE, \$M, \$B, \$C. Row 1: 3, 1.5, 69, 117, 21.7, 36, 0.63, 0.7, 85, 145, 273. Actual BW: 90, Adj 205: 616, Adj 365: 891.

A.I. Bred to Basin Keystone 2021 Due Date: 02/08/25

116 Pine Creek Missy 3398

DOB: 03/17/23 Freeze Brand: 3398 Reg # 20713669
Poss Achievement
Sitz Accomplishment 720F Sitz Barbaramere Nell 166D
Pine Creek Accomplish 0042 Sitz Bullseye 9994
PCAR Everelda Entense 8180 PCAR Everelda Entense 5251
KG Four Star 3036
KG Four Star 6107 KG Jessi Lynn 4450
PCAR Missy 0297 Sitz Bullseye 9994
PCAR Missy 7183 PCAR Missy 3183

Table with columns: CED, BW, WW, YW, HP, Milk, Marb, RE, \$M, \$B, \$C. Row 1: 5, 4, 93, 163, 12.6, 25, 0.42, 0.8, 68, 139, 248. Actual BW: 98, Adj 205: 648, Adj 365: 917.

A.I. Bred to Basin Keystone 2021 Due Date: 02/08/25

123 Pine Creek Erica 3172

DOB: 02/08/23 Freeze Brand: 3172 Reg # 20713703
Basin Advance 3134
Basin Deposit 6249 Basin Lucy 4288
Basin Safe Deposit 9324 Summitcrest Complete 1P55
Basin Joy 2006 Basin Joy 566T
Sitz Stellar 726D
Sitz Resilient 10208 Sitz Miss Burgess 1856
PCAR Erica 1293 Pine Creek Alliance 5254
PCAR Erica 8153 PCAR Erica 0011

Table with columns: CED, BW, WW, YW, HP, Milk, Marb, RE, \$M, \$B, \$C. Row 1: 8, -0.2, 70, 117, 8.3, 23, 1.31, 0.67, 83, 144, 270. Actual BW: 57, Adj 205: 501, Adj 365: 727.

Bull Bred Due Date: 02/26/25

124 Pine Creek Missy 3188

DOB: 02/09/23 Freeze Brand: 3188 Reg # 20713705
Coleman Charlo 0256
S A V Rainfall 6846 S A V Blackcap May 4136
Square B True North 8052 Connealy Consensus
Elbanna of Conanga 1209 Elbasta of Conanga 9703
KG Alliance 1193
Pine Creek Alliance 7255 PCAR Pride 3046
PCAR Missy 1321 Sitz New Design 9685
PCAR Missy 4146 PCAR Missy 1294

Table with columns: CED, BW, WW, YW, HP, Milk, Marb, RE, \$M, \$B, \$C. Row 1: 6, 1.6, 61, 113, 11.9, 28, 1.06, 0.51, 91, 168, 309. Actual BW: 72, Adj 205: 572, Adj 365: 940.

Bull Bred Due Date: 02/26/25

125 Pine Creek Starlet 3192J

DOB: 02/09/23 Freeze Brand: 3192J Reg # 20817893
Basin Advance 3134
Basin Deposit 6249
Basin Lucy 4288
Basin Safe Deposit 9324
Summitcrest Complete 1P55
Basin Joy 2006
Basin Joy 566T
Baldrige Bronc
Miss JT Lady of Time 203
PCAR Starlet 1079J
Pine Creek Alliance 7255
PCAR Starlet 9235J
PCAR Starlet 6017J

Table with columns CED, BW, WW, YW, HP, Milk, Marb, RE, \$M, \$B, \$C. Values: 10, -0.6, 69, 127, 12.8, 20, 1.21, 0.47, 51, 170, 271. Actual BW: 65, Adj 205: 503, Adj 365: 847.

127 Pine Creek Everelda E 3206

DOB: 02/11/23 Freeze Brand: 3206 Reg # 20817749
Ferguson Trailblazer 239E
Brumfield Trail Boss 057
CAV Lady Payweight 5608-7560
V A R Discovery 2240
Molitor999 Barbella 940-3012
CAV Lady Reserve 167-5608
SydGen Enhance
Miss JT Alli 740
PCAR Everelda Entense 1085
Pine Creek Alliance 5197
PCAR Everelda Entense 9353
PCAR Everelda Entense 8105

Table with columns CED, BW, WW, YW, HP, Milk, Marb, RE, \$M, \$B, \$C. Values: 8, 2.5, 88, 158, 17.6, 34, 0.84, 0.58, 71, 191, 319. Actual BW: 81, Adj 205: 686, Adj 365: 955.

129 Pine Creek Erica 3257

DOB: 03/07/23 Freeze Brand: 3257 Reg # 20817947
S A V Rainfall 6846
Square B True North 8052
Elbanna of Conanga 1209
Coleman Charlo 0256
S A V Blackcap May 4136
Connealy Consensus
Elbasta of Conanga 9703
Silveiras Conversion 8064
Hickory Hill Erica 009
Sitz Investment 660Z
PCAR Erica 9147
PCAR Erica 5166
PCAR Erica 1240

Table with columns CED, BW, WW, YW, HP, Milk, Marb, RE, \$M, \$B, \$C. Values: 9, -1.5, 64, 119, 11.4, 30, 1.13, 0.87, 71, 164, 284. Actual BW: 70, Adj 205: 608, Adj 365: 845.

131 Pine Creek Pride 3301

DOB: 03/10/23 Freeze Brand: 3301 Reg # 20713654
Woodhill Relevance
Pine Creek Relevance 0076
PCAR Ruby 4021
Connealy Confidence Plus
Woodhill Blackbird X197-27
KG Alliance 1193
PCAR Ruby 2281
Connealy Capitalist 028
LD Dixie Erica 2053
LD Capitalist 316
Pine Creek Image Maker 7131
PCAR Pride 0163
PCAR Pride 0085
PCAR Pride 4005

Table with columns CED, BW, WW, YW, HP, Milk, Marb, RE, \$M, \$B, \$C. Values: 3, 0.9, 72, 132, 14.6, 27, 1.04, 0.76, 56, 183, 293. Actual BW: 70, Adj 205: 507, Adj 365: 813.

126 Pine Creek Henrietta 3196J

DOB: 02/11/23 Freeze Brand: 3196J Reg # 20817897
Vermilion Spur E119
Heiken Broadview
JCH BHA Karen 7815
Connealy Spur
Vermilion Lass 4071
SITZ Logo 12964
JCH Karen 5130
SydGen Enhance
Miss JT Alli 740
KG Four Star 6107
PCAR Henrietta Pride 1099J
PCAR Henrietta Pride 9214J
PCAR Henrietta Pride 7076J

Table with columns CED, BW, WW, YW, HP, Milk, Marb, RE, \$M, \$B, \$C. Values: 11, -0.4, 74, 127, 12.3, 22, 0.75, 0.48, 76, 135, 251. Actual BW: 75, Adj 205: 621, Adj 365: 909.

128 Pine Creek Pride 3233

DOB: 03/01/23 Freeze Brand: 3233 Reg # 20713765
Mohnen Substantial 272
Sitz Profile 1160
SITZ Blackbird 334
Sitz Final Product 765a
PCAR Pride 6228
PCAR Pride 2010
Benfield Substance 8506
Mohnen Glyn Mawr Elba 1758
Connealy Final Product
SITZ Blackbird 532
Connealy Final Product
Sitz Pride 88T
Pine Creek Upward 0017
PCAR Pride 0085

Table with columns CED, BW, WW, YW, HP, Milk, Marb, RE, \$M, \$B, \$C. Values: 10, 0.1, 79, 144, 12.2, 22, 0.16, 0.34, 73, 123, 233. Actual BW: 77, Adj 205: 677, Adj 365: 959.

130 Pine Creek Barb Nell 3278

DOB: 03/09/23 Freeze Brand: 3278 Reg # 20713794
Mohnen Substantial 272
Sitz Profile 1160
SITZ Blackbird 334
Sitz Bullseye 9994
PCAR Barb Nell 7294
PCAR Barb Nell 0015
Benfield Substance 8506
Mohnen Glyn Mawr Elba 1758
Connealy Final Product
SITZ Blackbird 532
Mogck Bullseye
Sitz Pride 0128
Pine Creek Image Maker 7131
PCAR Barb Nell 8078

Table with columns CED, BW, WW, YW, HP, Milk, Marb, RE, \$M, \$B, \$C. Values: 11, -0.8, 69, 117, 13.8, 28, 0.36, 0.46, 61, 116, 211. Actual BW: 73, Adj 205: 564, Adj 365: 858.

132 Pine Creek Starlet 3326

DOB: 03/12/23 Freeze Brand: 3326 Reg # 20713723
K C F Bennett Summation
DL Summation 750
DL Princess 125
Ideal 9512 of 5570 7814
PCAR Starlet 3104
PCAR Starlet 0162
K C F Bennett Consent Y75
Thomas Patricia 9705
DL Final Grandview 53
DL Princess 156
Ideal 5570 of 0452 0534
Ideal 7814 of 2P88 086
Sitz Upward 307R
PCAR Starlet 4011

Table with columns CED, BW, WW, YW, HP, Milk, Marb, RE, \$M, \$B, \$C. Values: 10, -1.6, 62, 111, 13.9, 31, 0.57, 0.84, 59, 151, 255. Actual BW: 71, Adj 205: 645, Adj 365: 888.

133 Pine Creek Emma E 3331J

DOB: 03/12/23 Freeze Brand: 3331J Reg # 20713908
Sitz Accomplishment 720F
Pine Creek Accomplish 0042
PCAR Everelda Entense 8180
Poss Achievement
Sitz Barbaramere Nell 166D
Sitz Bullseye 9994
PCAR Everelda Entense 5251
Connealy Arsenal 2174
PCAR Missy 0251
Sitz Valubull 9835
PCAR Emma E 7037
Pine Creek Arsenal 6088
PCAR Emma E 8248
PCAR Emma E 9008
PCAR Emma E 7037

Table with columns CED, BW, WW, YW, HP, Milk, Marb, RE, \$M, \$B, \$C. Values: 15, 0.2, 64, 114, 16.6, 23, 0.83, 0.01, 67, 114, 215. Actual BW: 75, Adj 205: 565, Adj 365: 827.

135 Pine Creek Erica 3369J

DOB: 03/15/23 Freeze Brand: 3369J Reg # 20713857
K C F Bennett Summation
DL Summation 750
DL Princess 125
K C F Bennett Constitution
PCAR Erica 0034J
PCAR Erica 8334
K C F Bennett Consent Y75
Thomas Patricia 9705
DL Final Grandview 53
DL Princess 156
Basin Payweight 1682
K C F Miss Homestead C452
Pine Creek Investment 4213J
PCAR Erica 2113

Table with columns CED, BW, WW, YW, HP, Milk, Marb, RE, \$M, \$B, \$C. Values: 9, 1.6, 65, 120, 13.7, 30, 0.57, 0.86, 67, 164, 280. Actual BW: 74, Adj 205: 593, Adj 365: 937.

137 Pine Creek Henrietta 3384J

DOB: 03/15/23 Freeze Brand: 3384J Reg # 20713886
Sitz Accomplishment 720F
Pine Creek Accomplish 0042
PCAR Everelda Entense 8180
OCC Active Duty 522
PCAR Henrietta Pride 7002J
PCAR Henrietta Pride 5035J
Poss Achievement
Sitz Barbaramere Nell 166D
Sitz Bullseye 9994
PCAR Everelda Entense 5251
R B Active Duty 010
OCC Lucy 620
Sitz Final Product 765a
PCAR Henrietta Pride 7167J

Table with columns CED, BW, WW, YW, HP, Milk, Marb, RE, \$M, \$B, \$C. Values: 11, -0.4, 58, 105, 12.1, 37, 0.35, 0.52, 69, 102, 201. Actual BW: 75, Adj 205: 643, Adj 365: 830.

139 Pine Creek Eisa E 3401

DOB: 03/17/23 Freeze Brand: 3401 Reg # 20713784
Sitz Accomplishment 720F
Pine Creek Accomplish 0042
PCAR Everelda Entense 8180
OCC Active Duty 522
PCAR Eisa Evergreen 7209
PCAR Eisa Evergreen 4135
Poss Achievement
Sitz Barbaramere Nell 166D
Sitz Bullseye 9994
PCAR Everelda Entense 5251
R B Active Duty 010
OCC Lucy 620
Sitz Investment 660Z
PCAR Eisa Evergreen 0200

Table with columns CED, BW, WW, YW, HP, Milk, Marb, RE, \$M, \$B, \$C. Values: -2, 4.1, 87, 154, 11.6, 34, 0.53, 0.56, 64, 162, 274. Actual BW: 94, Adj 205: 678, Adj 365: 979.

134 Pine Creek Paige Mae 3363J

DOB: 03/15/23 Freeze Brand: 3363J Reg # 20817883
Mohnen Substantial 272
Sitz Profile 1160
SITZ Blackbird 334
Pine Creek Chisum 7008
PCAR Paige Mae 0269J
PCAR Paige Mae 5263J
Benfield Substance 8506
Mohnen Glyn Mawr Elba 1758
Connealy Final Product
SITZ Blackbird 532
S Chisum 255
PCAR Henrietta Pride 5040
KG Alliance 1193
PCAR Equalizer 1286J

Table with columns CED, BW, WW, YW, HP, Milk, Marb, RE, \$M, \$B, \$C. Values: 1, 1.8, 82, 149, 15.3, 21, 0.28, 1.04, 58, 153, 256. Actual BW: 83, Adj 205: 597, Adj 365: 866.

136 Pine Creek Lady Bell 3374J

DOB: 03/15/23 Freeze Brand: 3374J Reg # 20817983
Ferguson Trailblazer 239E
Brumfield Trail Boss 057
CAV Lady Payweight 5608-7560
Sitz Investment 660Z
PCAR Lady Bell 5141J
PCAR Lady Bell 0354
V A R Discovery 2240
Molitor999 Barbella 940-3012
CAV Lady Reserve 167-5608
Connealy Final Product
Sitz Ellunas Elite 656T
SydGen C C & 7
PCAR Lady Bell 7030

Table with columns CED, BW, WW, YW, HP, Milk, Marb, RE, \$M, \$B, \$C. Values: 13, 0.7, 80, 142, 16.4, 33, 0.47, 0.94, 67, 160, 275. Actual BW: 80, Adj 205: 612, Adj 365: 874.

138 Pine Creek Lady 3391J

DOB: 03/17/23 Freeze Brand: 3391J Reg # 20713872
K C F Bennett Summation
DL Summation 750
DL Princess 125
Mr JT Bronc 852
PCAR Lady 0308J
PCAR Lady 7166J
K C F Bennett Consent Y75
Thomas Patricia 9705
DL Final Grandview 53
DL Princess 156
Baldrige Bronc
Miss JT Lady of X 455
Sitz Bullseye 9994
PCAR Lady 3205J

Table with columns CED, BW, WW, YW, HP, Milk, Marb, RE, \$M, \$B, \$C. Values: 14, -0.2, 76, 144, 8.9, 37, 0.68, 1.07, 70, 168, 288. Actual BW: 57, Adj 205: 575, Adj 365: 844.

140 Pine Creek Lady 3406J

DOB: 03/18/23 Freeze Brand: 3406J Reg # 20817953
Mohnen Substantial 272
Sitz Profile 1160
SITZ Blackbird 334
Sitz Bullseye 9994
PCAR Lady 7166J
PCAR Lady 3205J
Benfield Substance 8506
Mohnen Glyn Mawr Elba 1758
Connealy Final Product
SITZ Blackbird 532
Mogck Bullseye
Sitz Pride 0128
Hoover Dam
PCAR Lady 7227J

Table with columns CED, BW, WW, YW, HP, Milk, Marb, RE, \$M, \$B, \$C. Values: 11, -0.7, 76, 135, 13, 14, 0.76, 0.5, 66, 149, 259. Actual BW: 78, Adj 205: 655, Adj 365: 967.

141 Pine Creek Emma E 3420
 DOB: 03/22/23 Freeze Brand: 3420 Reg # 20713762
 Poss Achievement
 Sitz Accomplishment 720F Sitz Barbaramere Nell 166D
Pine Creek Accomplish 0129 Sitz Final Product 765a
 PCAR Lady 5005 PCAR Lady 3069
 Connealy Final Product
 Sitz Final Product 765a Sitz Pride 88T
PCAR Emma E 6130 Connealy Consensus 7229
 PCAR Emma E 2075 PCAR Emma E 5122

CED	BW	WW	YW	HP	Milk	Marb	RE	\$M	\$B	\$C
15	-2.2	44	93	15.6	40	0.4	0.58	67	116	217
Actual BW			Adj 205			Adj 365				
65			523			777				

Bull Bred Due Date: 02/26/25

143 Pine Creek Ruth 3469
 DOB: 03/30/23 Freeze Brand: 3469 Reg # 20713843
 Woodhill Relevance
Pine Creek Relevance 0100J Sitz Final Product 765a
 PCAR Lady 5002J PCAR Lady 3182J
 S Chisum 255
 Pine Creek Chisum 7008 PCAR Henrietta Pride 5040
PCAR Ruth 9274 Sitz Final Product 765a
 PCAR Ruth 6058 PCAR Ruth 9229

CED	BW	WW	YW	HP	Milk	Marb	RE	\$M	\$B	\$C
7	-0.6	54	93	17.5	33	0.93	0.3	70	126	233
Actual BW			Adj 205			Adj 365				
77			601			830				

Bull Bred Due Date: 02/26/25

145 Pine Creek Polly 3518
 DOB: 04/07/23 Freeze Brand: 3518 Reg # 20713637
 K C F Bennett Summation
DL Summation 750 DL Final Grandview 53
 DL Princess 125 DL Princess 156
 KG Four Star 6107
PCAR Polly 0059 KG Jessi Lynn 4450
 PCAR Polly 8076 Pine Creek Timeless 2109
 PCAR Polly 0050

CED	BW	WW	YW	HP	Milk	Marb	RE	\$M	\$B	\$C
16	-2.2	62	109	13	30	0.61	0.48	75	133	248
Actual BW			Adj 205			Adj 365				
67			712			X				

Bull Bred Due Date: 02/26/25

147 Pine Creek Starlet 3208J
 DOB: 02/13/23 Freeze Brand: 3208J Reg # 20817889
 Basin Deposit 6249
Basin Safe Deposit 9324 Basin Joy 2006
 Basin Advance 3134
 Basin Lucy 4288
 Summitcrest Complete 1P55
 Basin Joy 566T
 Basin Payweight 1682
 K C F Bennett Constitution K C F Miss Homestead C452
PCAR Starlet 1194J KG Alliance 1193
 PCAR Starlet 4239J PCAR Starlet 45J

CED	BW	WW	YW	HP	Milk	Marb	RE	\$M	\$B	\$C
13	0.3	90	144	12.9	29	0.93	0.62	93	170	313
Actual BW			Adj 205			Adj 365				
72			642			892				

Bull Bred Due Date: 02/28/25

142 Pine Creek Starlet 3443
 DOB: 03/26/23 Freeze Brand: 3443 Reg # 20713730
 Silveiras Conversion 8064
 BUBS Southern Charm AA31 Hickory Hill Erica 009
Pine Creek Charm 9212 Sitz Investment 660Z
 PCAR Missy 5134 PCAR Missy 6150
 Stevenson Cattleman R142
 Mr JT Ribeye 946 Miss JT Bandie 345
PCAR Starlet 3289 Sitz Greatplains 810Z
 PCAR Starlet 6004 PCAR Starlet 4011

CED	BW	WW	YW	HP	Milk	Marb	RE	\$M	\$B	\$C
15	-1.2	56	100	10.7	38	0.5	0.66	52	119	206
Actual BW			Adj 205			Adj 365				
66			550			788				

Bull Bred Due Date: 02/26/25

144 Pine Creek Lady 3509
 DOB: 04/06/23 Freeze Brand: 3509 Reg # 20713807
 Baldrige Bronc
Mr JT Bronc 818 Miss JT Lady of Time 203
 Miss JT Becky 506
 Mogck Bullseye
 Sitz Bullseye 9994 Sitz Pride 0128
PCAR Lady 8072 WMR Timeless 458
 Pcar Lady 2062 PCAR Lady 7065

CED	BW	WW	YW	HP	Milk	Marb	RE	\$M	\$B	\$C
2	3.5	72	133	11.3	37	0.35	0.71	43	130	212
Actual BW			Adj 205			Adj 365				
95			678			966				

Bull Bred Due Date: 02/26/25

146 Pine Creek Pride 3571
 DOB: 04/21/23 Freeze Brand: 3571 Reg # 20713656
 Sitz Resilient 10208
Pine Creek Resilient 1011 Sitz Stellar 726D
 PCAR Polly 9020 Sitz Miss Burgess 1856
 LD Capitalist 316
 PCAR Polly 7288
 Connealy Confidence Plus
 Woodhill Relevance Woodhill Blackbird X197-Z7
PCAR Pride 0173 Sitz Bullseye 9994
 PCAR Pride 7197 PCAR Pride 4141

CED	BW	WW	YW	HP	Milk	Marb	RE	\$M	\$B	\$C
3	1.7	77	128	12.3	25	0.72	0.34	77	147	268
Actual BW			Adj 205			Adj 365				
78			572			801				

Bull Bred Due Date: 02/26/25

148 Pine Creek Polly 3307
 DOB: 03/10/23 Freeze Brand: 3307 Reg # 20713649
 Mohnen Substantial 272
Sitz Profile 1160 SITZ Blackbird 334
 Benfield Substance 8506
 Mohnen Glyn Mawr Elba 1758
 Connealy Final Product
 SITZ Blackbird 532
 Mogck Bullseye
 Sitz Bullseye 9994 Sitz Pride 0128
PCAR Polly 0106 HF Thunderbird 146Y
 PCAR Polly 5175 PCAR Polly 8125

CED	BW	WW	YW	HP	Milk	Marb	RE	\$M	\$B	\$C
8	0.5	79	133	14.6	20	0.12	1.38	67	155	268
Actual BW			Adj 205			Adj 365				
78			649			931				

Bull Bred Due Date: 02/28/25

149 Pine Creek Paige Mae 3324J
 DOB: 03/11/23 Freeze Brand: 3324J Reg # 20713885
 Poss Achievement
 Sitz Accomplishment 720F Sitz Barbaramere Nell 166D
Pine Creek Accomplish 0042 Sitz Bullseye 9994
 PCAR Everelda Entense 8180 PCAR Everelda Entense 5251
 Sitz Investment 660Z
 Pine Creek Investment 4213J PCAR Lady Bell 0354
PCAR Paige Mae 6314J WK Bobcat
 PCAR Esther 2030J Miss JT Esther 446

CED	BW	WW	YW	HP	Milk	Marb	RE	\$M	\$B	\$C
-3	4.3	57	105	13.8	27	0.5	0.23	51	123	211
Actual BW			Adj 205			Adj 365				
89			593			761				

Bull Bred Due Date: 02/28/25

151 Pine Creek Beauty 3490
 DOB: 04/02/23 Freeze Brand: 3490 Reg # 20713773
 Sitz Bullseye 9994
Pine Creek Bullseye 9072J PCAR Emma E 8132
 PCAR Beauty 4041
 Mogck Bullseye
 Sitz Pride 0128
 Sitz Valubull 9835
 PCAR Emma E 304
 Mogck Bullseye
 Sitz Bullseye 9994 Sitz Pride 0128
PCAR Beauty 7103 Pine Creek Upward 0017
 PCAR Beauty 4041 PCAR Beauty 9122

CED	BW	WW	YW	HP	Milk	Marb	RE	\$M	\$B	\$C
-1	4.4	81	136	12.5	30	0.46	0.55	37	123	197
Actual BW			Adj 205			Adj 365				
76			602			861				

Bull Bred Due Date: 02/28/25

153 Pine Creek Beauty 3498
 DOB: 04/04/23 Freeze Brand: 3498 Reg # 20713826
 Woodhill Relevance
Pine Creek Relevance 0100J Sitz Stellar 726D
 PCAR Lady 5002J Sitz Miss Burgess 1856
 LD Capitalist 316
 PCAR Polly 7288
 Connealy Confidence Plus
 Woodhill Relevance Woodhill Blackbird X197-Z7
PCAR Beauty 9070 Sitz Bullseye 9994
 PCAR Beauty 9122 PCAR Pride 4141

CED	BW	WW	YW	HP	Milk	Marb	RE	\$M	\$B	\$C
2	1.8	66	115	16	37	0.92	0.77	67	150	262
Actual BW			Adj 205			Adj 365				
89			658			936				

Bull Bred Due Date: 03/01/25

155 Pine Creek Lady 3266J
 DOB: 03/07/23 Freeze Brand: 3266J Reg # 20713904
 Woodhill Relevance
Pine Creek Relevance 0076 PCAR Ruby 4021
 Connealy Confidence Plus
 Woodhill Blackbird X197-Z7
 KG Alliance 1193
 PCAR Ruby 2281
 Sitz Alliance 7544
 KG Alliance 1193 KG Rito Lady 9152
PCAR Lady 8183 Ideal 9512 of 5570 7814
 PCAR Lady 2089 PCAR Lady 6033

CED	BW	WW	YW	HP	Milk	Marb	RE	\$M	\$B	\$C
10	-3.2	79	133	12.3	31	1.08	0.43	63	162	273
Actual BW			Adj 205			Adj 365				
70			655			949				

Bull Bred Due Date: 03/03/25

150 Pine Creek Pride 3453
 DOB: 03/28/23 Freeze Brand: 3453 Reg # 20713768
 3F Epic 4631
Pine Creek Epic 9128 Sitz Bullseye 9994
 PCAR Erica 6082
 Varilek Product 2010 04
 Zebo Queen 1072
 Sitz Final Product 765a
 PCAR Erica 0201
 Connealy Right Answer 746
 Sitz Right Answer 644Y Sitz Barbaramere Jet 191W
PCAR Pride 6310 H A Image Maker 0415
 PCAR Pride 7052 P C A R Pride 1157

CED	BW	WW	YW	HP	Milk	Marb	RE	\$M	\$B	\$C
0	2.5	71	132	14.7	36	0.62	0.18	55	147	246
Actual BW			Adj 205			Adj 365				
89			577			763				

Bull Bred Due Date: 02/28/25

152 Pine Creek Henrietta 3318
 DOB: 03/11/23 Freeze Brand: 3318 Reg # 20713724
 K C F Bennett Summation
DL Summation 750 DL Princess 125
 DL Princess 156
 Connealy Consensus
 Blue Lilly of Conanga 16
 Sitz Greatplains 810Z
PCAR Henrietta Pride 3117 PCAR Henrietta Pride 5015
 PCAR Henrietta Pride 341

CED	BW	WW	YW	HP	Milk	Marb	RE	\$M	\$B	\$C
9	0.3	50	94	7.5	25	0.54	0.48	65	127	230
Actual BW			Adj 205			Adj 365				
81			556			825				

Bull Bred Due Date: 03/01/25

154 PineCreek Special Lady 3191J
 DOB: 02/09/23 Freeze Brand: 3191J Reg # 20817933
 Basin Deposit 6249
Basin Safe Deposit 9324 Basin Joy 2006
 Basin Advance 3134
 Basin Lucy 4288
 Summitcrest Complete 1P55
 Basin Joy 566T
 KG Alliance 1193
 Pine Creek Alliance 7255 PCAR Pride 3046
PCAR Special Lady 1327J KG Alliance 1193
 PCAR Special Lady 4036J PCAR Special Lady 2031J

CED	BW	WW	YW	HP	Milk	Marb	RE	\$M	\$B	\$C
8	-0.5	72	121	9.4	33	1.22	0.31	76	154	276
Actual BW			Adj 205			Adj 365				
64			645			895				

Bull Bred Due Date: 03/03/25

156 Pine Creek Barbaramere 3305
 DOB: 03/10/23 Freeze Brand: 3305 Reg # 20713632
 S A V Rainfall 6846
Square B True North 8052 Elbanna of Conanga 1209
 Coleman Charlo 0256
 S A V Blackcap May 4136
 Connealy Consensus
 Elbasta of Conanga 9703
 Poss Achievement
 Sitz Accomplishment 720F Sitz Barbaramere Nell 166D
PCAR Barbaramere Nell 0010 KG Alliance 1193
 PCAR Barbaramere Nell 8099 PCAR Barbaramere Nell 1290

CED	BW	WW	YW	HP	Milk	Marb	RE	\$M	\$B	\$C
16	-2.9	71	123	14.9	29	0.82	0.72	82	132	253
Actual BW			Adj 205			Adj 365				
72			618			874				

Bull Bred Due Date: 03/03/25

157 Pine Creek Starlet 3617

DOB: 05/20/23 Freeze Brand: 3617 Reg # 20713720
Silveiras Conversion 8064
BUBS Southern Charm AA31 Hickory Hill Erica 009
Pine Creek Charm 9212 Sitz Investment 660Z
PCAR Missy 5134 PCAR Missy 6150
Mr JT Thunder 959
Pine Creek Thunder 1331 PCAR Missy 7080
PCAR Starlet 3063 Sitz Valubull 9835
PCAR Starlet 0127 PCAR Starlet 303

Table with columns CED, BW, WW, YW, HP, Milk, Marb, RE, \$M, \$B, \$C. Row 1: 9, -0.5, 55, 96, 11.9, 33, 0.54, 0.63, 66, 138, 245. Summary: Actual BW 70, Adj 205 444, Adj 365 X.

Bull Bred Due Date: 03/03/25

158 Pine Creek Lady 3575

DOB: 04/21/23 Freeze Brand: 3575 Reg # 20713820
EF Commando 1366
Baldrige Bronc Baldrige Isabel Y69
Mr JT Bronc 818 WMR Timeless 458
Miss JT Lady of Time 203 Miss JT Becky 506
Mogck Bullseye
Sitz Bullseye 9994 Sitz Pride 0128
PCAR Lady 8160 Pine Creek Consensus 2004
PCAR Lady 4010 PCAR Lady 2138

Table with columns CED, BW, WW, YW, HP, Milk, Marb, RE, \$M, \$B, \$C. Row 1: 11, 0.1, 63, 107, 9.7, 30, 0.63, 0.7, 54, 132, 225. Summary: Actual BW 72, Adj 205 635, Adj 365 869.

Bull Bred Due Date: 03/05/25

165 Pine Creek Erica 3525

DOB: 04/07/23 Freeze Brand: 3525 Reg # 20713709
Mogck Bullseye
Sitz Bullseye 9994 Sitz Pride 0128
Pine Creek Bullseye 8081J Sitz Final Product 765a
PCAR Lady 5002J PCAR Lady 3182J
Leachman Right Time 338-5605
WMR Timeless 458 WMR Blackcap 521
Sitz New Design 9685
PCAR Erica 2064 PCAR Erica 368
PCAR Erica 8134

Table with columns CED, BW, WW, YW, HP, Milk, Marb, RE, \$M, \$B, \$C. Row 1: 3, 3.5, 74, 119, 15.8, 24, 0.7, 0.88, 88, 159, 294. Summary: Actual BW 79, Adj 205 599, Adj 365 847.

Bull Bred Due Date: 03/09/25

166 Pine Creek Starlet 3285

DOB: 03/09/23 Freeze Brand: 3285 Reg # 20817964
V A R Discovery 2240
Ferguson Trailblazer 239E Molitor999 Barbella 940-3012
Brumfield Trail Boss 057 Basin Payweight 1682
CAV Lady Payweight 5608-7560 CAV Lady Reserve 167-5608
R B Active Duty 010
OCC Active Duty 522 OCC Lucy 620
PCAR Starlet 8008 Sitz Final Product 765a
PCAR Starlet 6182 PCAR Starlet 3104

Table with columns CED, BW, WW, YW, HP, Milk, Marb, RE, \$M, \$B, \$C. Row 1: 13, 0, 71, 125, 19.4, 30, 0.34, 0.8, 79, 119, 233. Summary: Actual BW 81, Adj 205 630, Adj 365 867.

Bull Bred Due Date: 03/10/25

159 Pine Creek Emma E 3230

DOB: 02/28/23 Freeze Brand: 3230 Reg # 20713689
Connealy Confidence Plus
Woodhill Relevance Woodhill Blackbird X197-Z7
Pine Creek Relevance 0102 Sitz Investment 660Z
PCAR Missy 4089 PCAR Missy 6150
Mogck Bullseye
Sitz Bullseye 9994 Sitz Pride 0128
PCAR Emma E 1139 Pine Creek IN Focus 7022
PCAR Emma E 2133 PCAR Emma E 8132

Table with columns CED, BW, WW, YW, HP, Milk, Marb, RE, \$M, \$B, \$C. Row 1: -1, 4.3, 89, 156, 13.9, 28, 0.75, 0.34, 83, 174, 309. Summary: Actual BW 78, Adj 205 571, Adj 365 709.

Bull Bred Due Date: 03/07/25

160 Pine Creek Henrietta 3376

DOB: 03/15/23 Freeze Brand: 3376 Reg # 20713671
K C F Bennett Consent Y75
K C F Bennett Summation Thomas Patricia 9705
DL Summation 750 DL Final Grandview 53
DL Princess 125 DL Princess 156
S Chisum 255
Pine Creek Chisum 7005 PCAR Erica 5166
PCAR Henrietta Pride 0322 Sitz Final Product 765a
PCAR Henrietta Pride 6147 PCAR Henrietta Pride 3249

Table with columns CED, BW, WW, YW, HP, Milk, Marb, RE, \$M, \$B, \$C. Row 1: 14, -0.9, 56, 109, 5.8, 31, 0.1, 0.72, 59, 109, 200. Summary: Actual BW 72, Adj 205 572, Adj 365 822.

Bull Bred Due Date: 03/08/25

167 Pine Creek Blackcap 3327

DOB: 03/12/23 Freeze Brand: 3327 Reg # 20713731
K C F Bennett Consent Y75
K C F Bennett Summation Thomas Patricia 9705
DL Summation 750 DL Final Grandview 53
DL Princess 125 DL Princess 156
Stevenson Cattleman R142
Mr JT Ribeye 946 Miss JT Bandie 345
PCAR Blackcap 3309 Sitz Greatplains 8102
PCAR Blackcap 5075 PCAR Blackcap 334

Table with columns CED, BW, WW, YW, HP, Milk, Marb, RE, \$M, \$B, \$C. Row 1: 11, -0.4, 59, 112, 11.5, 37, 0.31, 0.98, 69, 134, 243. Summary: Actual BW 60, Adj 205 630, Adj 365 849.

Bull Bred Due Date: 03/10/25

168 Pine Creek Henrietta 3396

DOB: 03/17/23 Freeze Brand: 3396 Reg # 20713660
Poss Achievement
Sitz Accomplishment 720F Sitz Bararamere Nell 166D
Pine Creek Accomplish 0042 Sitz Bullseye 9994
PCAR Everelda Entense 8180 PCAR Everelda Entense 5251
Panther Cr Incredible 6704
KR Incredible 8205 WK Lassy 2371
PCAR Henrietta Pride 0240 OCC Active Duty 522
PCAR Henrietta Pride 7212 PCAR Henrietta Pride 3249

Table with columns CED, BW, WW, YW, HP, Milk, Marb, RE, \$M, \$B, \$C. Row 1: 9, 1.9, 81, 145, 9.5, 26, 0.64, 0.52, 61, 160, 269. Summary: Actual BW 85, Adj 205 586, Adj 365 874.

Bull Bred Due Date: 03/10/25

161 Pine Creek Missy 3452

DOB: 03/28/23 Freeze Brand: 3452 Reg # 20713795
Mogck Bullseye
Sitz Bullseye 9994 Sitz Pride 0128
Pine Creek Bullseye 9072J Sitz Valubull 9835
PCAR Emma E 8132 PCAR Emma E 304
Sitz Investment 660Z
Pine Creek Investment 4213J PCAR Lady Bell 0354
PCAR Missy 7308 Sitz Valubull 9835
PCAR Missy 8032 PCAR Missy 6150

Table with columns CED, BW, WW, YW, HP, Milk, Marb, RE, \$M, \$B, \$C. Row 1: 1, 2.9, 64, 112, 16.2, 28, 0.41, 0.34, 49, 118, 202. Summary: Actual BW 89, Adj 205 632, Adj 365 930.

Bull Bred Due Date: 03/08/25

162 Pine Creek Missy 3561J

DOB: 04/15/23 Freeze Brand: 3561J Reg # 20713920
Connealy Confidence Plus
Woodhill Relevance Woodhill Blackbird X197-Z7
Pine Creek Relevance 0100J Sitz Final Product 765a
PCAR Lady 5002J PCAR Lady 3182J
R B Active Duty 010
OCC Active Duty 522 OCC Lucy 620
PCAR Missy 9030J S Chisum 255
PCAR Missy 7101 PCAR Missy 9221

Table with columns CED, BW, WW, YW, HP, Milk, Marb, RE, \$M, \$B, \$C. Row 1: 8, 1, 52, 91, 12.5, 32, 0.62, 0.69, 64, 133, 237. Summary: Actual BW 83, Adj 205 602, Adj 365 850.

Bull Bred Due Date: 03/08/25

169 Pine Creek Henrietta 3603

DOB: 04/30/23 Freeze Brand: 3603 Reg # 20713739
Poss Achievement
Sitz Accomplishment 720F Sitz Bararamere Nell 166D
Pine Creek Accomplish 0129 Sitz Final Product 765a
PCAR Lady 5005 PCAR Lady 3069
Ideal 9512 of 5570 7814
Pine Creek Ideal 1210 PCAR Starlet 4011
Sitz New Design 9685
PCAR Henrietta Pride 4261 PCAR Henrietta Pride 0206
PCAR Henrietta Pride 8187

Table with columns CED, BW, WW, YW, HP, Milk, Marb, RE, \$M, \$B, \$C. Row 1: 3, 2.5, 57, 113, 14.6, 30, 0.78, 0.44, 70, 141, 253. Summary: Actual BW 85, Adj 205 453, Adj 365 X.

Bull Bred Due Date: 03/11/25

170 Pine Creek Lady 3290

DOB: 03/09/23 Freeze Brand: 3290 Reg # 20817773
V A R Discovery 2240
Ferguson Trailblazer 239E Molitor999 Barbella 940-3012
Brumfield Trail Boss 057 Basin Payweight 1682
CAV Lady Payweight 5608-7560 CAV Lady Reserve 167-5608
Mogck Bullseye
Sitz Bullseye 9994 Sitz Pride 0128
PCAR Lady 0121 Sitz Final Product 765a
PCAR Lady 6105 PCAR Lady 1139

Table with columns CED, BW, WW, YW, HP, Milk, Marb, RE, \$M, \$B, \$C. Row 1: 17, -0.3, 81, 137, 16.3, 34, 0.71, 0.41, 76, 144, 263. Summary: Actual BW 67, Adj 205 652, Adj 365 927.

Bull Bred Due Date: 03/13/25

163 Pine Creek Pride 3582

DOB: 04/22/23 Freeze Brand: 3582 Reg # 20713821
EF Commando 1366
Baldrige Bronc Baldrige Isabel Y69
Mr JT Bronc 818 WMR Timeless 458
Miss JT Lady of Time 203 Miss JT Becky 506
Connealy Capitalist 028
Sitz Alliance 7544 LD Dixie Erica 2053
KG Alliance 1193 KG Rito Lady 9152
PCAR Pride 8198 Hoover Dam
PCAR Pride 3046 PCAR Pride 0085

Table with columns CED, BW, WW, YW, HP, Milk, Marb, RE, \$M, \$B, \$C. Row 1: 7, 1.5, 64, 122, 11.2, 26, 0.59, 0.67, 51, 156, 253. Summary: Actual BW 76, Adj 205 631, Adj 365 879.

Bull Bred Due Date: 03/08/25

164 Pine Creek Pride 3362J

DOB: 03/15/23 Freeze Brand: 3362J Reg # 20713855
Poss Achievement
Sitz Accomplishment 720F Sitz Bararamere Nell 166D
Pine Creek Accomplish 0042 Sitz Bullseye 9994
PCAR Everelda Entense 8180 PCAR Everelda Entense 5251
Connealy Capitalist 028
LD Capitalist 316 LD Dixie Erica 2053
PCAR Pride 0021J Pine Creek Alliance 4228J
PCAR Pride 8338 PCAR Pride 9184

Table with columns CED, BW, WW, YW, HP, Milk, Marb, RE, \$M, \$B, \$C. Row 1: 7, 2.7, 76, 139, 17.6, 23, 0.83, 0.72, 78, 168, 296. Summary: Actual BW 83, Adj 205 592, Adj 365 854.

Bull Bred Due Date: 03/09/25

171 Pine Creek Henrietta 3442

DOB: 03/26/23 Freeze Brand: 3442 Reg # 20713741
Varilek Product 2010 04
3F Epic 4631 Zebo Queen 1072
Pine Creek Epic 9128 Sitz Final Product 765a
PCAR Erica 6082 PCAR Erica 0201
Connealy Final Product
Sitz Final Product 765a Sitz Pride 88T
PCAR Henrietta Pride 5031 Connealy Consensus 7229
PCAR Henrietta Pride 3207 PCAR Henrietta Pride 5126

Table with columns CED, BW, WW, YW, HP, Milk, Marb, RE, \$M, \$B, \$C. Row 1: 3, 1.8, 91, 158, 9.6, 33, 0.46, 0.73, 39, 138, 218. Summary: Actual BW 78, Adj 205 633, Adj 365 921.

Bull Bred Due Date: 03/13/25

172 Pine Creek Starlet 3395

DOB: 03/17/23 Freeze Brand: 3395 Reg # 20817768
V A R Discovery 2240
Ferguson Trailblazer 239E Molitor999 Barbella 940-3012
Brumfield Trail Boss 057 Basin Payweight 1682
CAV Lady Payweight 5608-7560 CAV Lady Reserve 167-5608
Basin Payweight 1682
K C F Bennett Constitution K C F Miss Homestead C452
PCAR Starlet 0178 Ideal 9512 of 5570 7814
PCAR Starlet 4297 PCAR Starlet 6082

Table with columns CED, BW, WW, YW, HP, Milk, Marb, RE, \$M, \$B, \$C. Row 1: 4, 4, 93, 161, 15.5, 25, 0.84, 0.39, 49, 186, 290. Summary: Actual BW 91, Adj 205 638, Adj 365 939.

Bull Bred Due Date: 03/14/25

173 Pine Creek Lady 3570J
 DOB: 04/18/23 Freeze Brand: 3570J Reg # 20713895
 Silveiras Conversion 8064
 BUBS Southern Charm AA31 Hickory Hill Erica 009
Pine Creek Charm 9212
 PCAR Missy 5134 PCAR Missy 6150
 KG High Regard 2073
 KG High Regard 5087
PCAR Lady 7084J
 PCAR Lady 7227J Pine Creek Dateline 5133
 P C A R Lady 724

CED	BW	WW	YW	HP	Milk	Marb	RE	\$M	\$B	\$C
1	2.4	71	130	9.4	31	0	0.73	30	146	219
Actual BW			Adj 205			Adj 365				
85			695			938				

Bull Bred Due Date: 03/14/25

174 Pine Creek Missy 3512
 DOB: 04/06/23 Freeze Brand: 3512 Reg # 20713670
 Sitz Stellar 726D
 Sitz Resilient 10208
Pine Creek Resilient 1011
 PCAR Polly 9020
 LD Capitalist 316
 PCAR Polly 7288
 KG High Regard 2073
 KG Princess 3259
PCAR Missy 0316
 PCAR Missy 4247
 KG Alliance 1193
 PCAR Missy 0238

CED	BW	WW	YW	HP	Milk	Marb	RE	\$M	\$B	\$C
5	1.7	58	109	13.8	26	0.41	0.36	56	109	197
Actual BW			Adj 205			Adj 365				
85			540			833				

Bull Bred Due Date: 03/16/25

181 Pine Creek Polly 3344
 DOB: 03/13/23 Freeze Brand: 3344 Reg # 20713808
 Connealy Confidence Plus
 Woodhill Relevance
Pine Creek Relevance 0076
 PCAR Ruby 4021
 Woodhill Blackbird X197-Z7
 KG Alliance 1193
 PCAR Ruby 2281
 WMR Timeless 458
 PCAR Doll 8215
 Pine Creek IN Focus 7022
PCAR Polly 8076
 PCAR Polly 0050
 PCAR Polly 6248

CED	BW	WW	YW	HP	Milk	Marb	RE	\$M	\$B	\$C
-2	2.5	87	146	11.5	30	1.26	0.41	44	188	288
Actual BW			Adj 205			Adj 365				
87			730			1036				

Bull Bred Due Date: 03/21/25

182 Pine Creek Starlet 3599
 DOB: 04/26/23 Freeze Brand: 3599 Reg # 20713645
 K C F Bennett Summation
 DL Summation 750
 DL Princess 125
 Sitz Bullseye 9994
PCAR Starlet 0097
 PCAR Starlet 1171
 K C F Bennett Consent Y75
 Thomas Patricia 9705
 DL Final Grandview 53
 DL Princess 156
 Mogck Bullseye
 Sitz Pride 0128
 Mr JT Ribeye 946
 PCAR Starlet 5084

CED	BW	WW	YW	HP	Milk	Marb	RE	\$M	\$B	\$C
11	1.8	75	130	11	31	0.55	0.78	68	147	259
Actual BW			Adj 205			Adj 365				
80			650			X				

Bull Bred Due Date: 03/21/25

175 Pine Creek Barbaramere 3185
 DOB: 02/08/23 Freeze Brand: 3185 Reg # 20713680
 Basin Advance 3134
 Basin Deposit 6249
Basin Safe Deposit 9324
 Basin Joy 2006
 Basin Lucy 4288
 Summitcrest Complete 1P55
 Basin Joy 566T
 Connealy Capitalist 028
 LD Dixie Erica 2053
PCAR Barbaramere 1049
 PCAR Barbaramere 9311
 PCAR Barbaramere 5262
 LD Capitalist 316
 Pine Creek Bullseye 7260
 PCAR Barbaramere 9311
 PCAR Barbaramere 5262

CED	BW	WW	YW	HP	Milk	Marb	RE	\$M	\$B	\$C
9	1.1	77	128	10.1	33	1.29	0.39	84	155	285
Actual BW			Adj 205			Adj 365				
70			630			804				

Bull Bred Due Date: 03/18/25

176 Pine Creek Erica 3434
 DOB: 03/24/23 Freeze Brand: 3434 Reg # 20713852
 Connealy Confidence Plus
 Woodhill Relevance
Pine Creek Relevance 0100J
 PCAR Lady 5002J
 Woodhill Blackbird X197-Z7
 Sitz Final Product 765a
 PCAR Lady 3182J
 Sitz Bullseye 9994
 PCAR Emma E 0032
PCAR Erica 9350
 PCAR Erica 5216
 Pine Creek Bullseye 7260
 Sitz Investment 660Z
 PCAR Erica 0160

CED	BW	WW	YW	HP	Milk	Marb	RE	\$M	\$B	\$C
9	-0.9	51	105	9.9	34	1.1	0.63	64	164	277
Actual BW			Adj 205			Adj 365				
72			577			820				

Bull Bred Due Date: 03/18/25

183 Pine Creek Barb Nell 3336
 DOB: 03/12/23 Freeze Brand: 3336 Reg # 20713655
 Benfield Substance 8506
 Mohnen Substantial 272
Sitz Profile 1160
 SITZ Blackbird 334
 Mohnen Glyn Mawr Elba 1758
 Connealy Final Product
 SITZ Blackbird 532
 KG Alliance 1193
 PCAR Pride 3046
PCAR Barb Nell 0165
 PCAR Barb Nell 0002
 Pine Creek Alliance 7255
 Pine Creek IN Focus 7022
 PCAR Barb Nell 8117

CED	BW	WW	YW	HP	Milk	Marb	RE	\$M	\$B	\$C
5	1.5	68	118	12.5	30	0.65	0.21	85	125	247
Actual BW			Adj 205			Adj 365				
75			643			862				

Bull Bred Due Date: 03/22/25

184 Pine Creek Everelda E 3405
 DOB: 03/18/23 Freeze Brand: 3405 Reg # 20713853
 K C F Bennett Summation
 DL Summation 750
 DL Princess 125
 Pine Creek Alliance 5197
PCAR Everelda Entense 9353
 PCAR Everelda Entense 8105
 K C F Bennett Consent Y75
 Thomas Patricia 9705
 DL Final Grandview 53
 DL Princess 156
 KG Alliance 1193
 PCAR Pride 6064
 Sitz Valubull 9835
 PCAR Everelda Entense 2243

CED	BW	WW	YW	HP	Milk	Marb	RE	\$M	\$B	\$C
4	1.7	71	136	13.4	33	0.43	0.46	73	146	262
Actual BW			Adj 205			Adj 365				
84			584			859				

Bull Bred Due Date: 03/22/25

177 Pine Creek Mae 3489J
 DOB: 04/02/23 Freeze Brand: 3489J Reg # 20713873
 K C F Bennett Summation
 DL Summation 750
 DL Princess 125
 Pine Creek Bullseye 7260
PCAR Mae 0334J
 PCAR Mae 4227J
 K C F Bennett Consent Y75
 Thomas Patricia 9705
 DL Final Grandview 53
 DL Princess 156
 Sitz Bullseye 9994
 PCAR Emma E 0032
 KG Alliance 1193
 PCAR Mae 0218J

CED	BW	WW	YW	HP	Milk	Marb	RE	\$M	\$B	\$C
11	0.4	81	150	10.5	33	0.53	1.2	62	174	288
Actual BW			Adj 205			Adj 365				
72			584			886				

Bull Bred Due Date: 03/18/25

178 Pine Creek Starlet 3245
 DOB: 03/05/23 Freeze Brand: 3245 Reg # 20817974
 V A R Discovery 2240
 Ferguson Trailblazer 239E
Brumfield Trail Boss 057
 CAV Lady Payweight 5608-7560
 Molitor999 Barbella 940-3012
 Basin Payweight 1682
 CAV Lady Reserve 167-5608
 Sitz Investment 660Z
 PCAR Lady Bell 0354
PCAR Starlet 6185
 PCAR Starlet 3063
 Pine Creek Investment 4213J
 Pine Creek Thunder 1331
 PCAR Starlet 0127

CED	BW	WW	YW	HP	Milk	Marb	RE	\$M	\$B	\$C
3	3.8	87	145	15.1	28	0.45	1.15	63	159	269
Actual BW			Adj 205			Adj 365				
86			651			894				

Bull Bred Due Date: 03/20/25

185 Pine Creek Ellie Elite 3432
 DOB: 03/23/23 Freeze Brand: 3432 Reg # 20713842
 Poss Achievement
 Sitz Accomplishment 720F
Pine Creek Accomplish 0042
 PCAR Everelda Entense 8180
 Sitz Investment 660Z
 PCAR Lady Bell 0354
 Mr JT Ribeye 946
 PCAR Ellie Elite 4082
 Pine Creek Investment 4213J
PCAR Ellie Elite 9270
 PCAR Ellie Elite 1136

CED	BW	WW	YW	HP	Milk	Marb	RE	\$M	\$B	\$C
9	-0.5	61	108	13	18	0.64	0.45	74	131	244
Actual BW			Adj 205			Adj 365				
76			569			798				

Bull Bred Due Date: 03/23/25

186 Pine Creek Polly 3455
 DOB: 03/28/23 Freeze Brand: 3455 Reg # 20713835
 Connealy Confidence Plus
 Woodhill Relevance
Pine Creek Relevance 0100J
 PCAR Lady 5002J
 Woodhill Blackbird X197-Z7
 Sitz Final Product 765a
 PCAR Lady 3182J
 R B Active Duty 010
 OCC Lucy 620
 Pine Creek Thunder 1331
 PCAR Polly 359
 OCC Active Duty 522
PCAR Polly 9139
 PCAR Polly 3134

CED	BW	WW	YW	HP	Milk	Marb	RE	\$M	\$B	\$C
6	0.5	53	103	14.7	38	0.37	0.82	68	118	221
Actual BW			Adj 205			Adj 365				
76			597			856				

Bull Bred Due Date: 03/23/25

179 Pine Creek Erica 3399
 DOB: 03/17/23 Freeze Brand: 3399 Reg # 20713816
 Benfield Substance 8506
 Mohnen Substantial 272
Sitz Profile 1160
 SITZ Blackbird 334
 S Chisum 255
PCAR Erica Everelda 8146
 PCAR Erica Everelda 0184
 Benfield Substance 8506
 Mohnen Glyn Mawr Elba 1758
 Connealy Final Product
 SITZ Blackbird 532
 S Chisum 6175
 S Blossom 0278
 Pine Creek Image Maker 7131
 PCAR Erica Everelda 6171

CED	BW	WW	YW	HP	Milk	Marb	RE	\$M	\$B	\$C
11	-1.2	66	104	10.9	13	-0.03	0.88	71	112	216
Actual BW			Adj 205			Adj 365				
75			601			795				

Bull Bred Due Date: 03/20/25

180 Pine Creek Starlet 3203
 DOB: 02/11/23 Freeze Brand: 3203 Reg # 20817901
 Connealy Spur
 Vermilion Spur E119
Heiken Broadview
 JCH BHA Karen 7815
 Baldridge Bronc
 Miss JT Lady of Time 203
 Sitz Bullseye 9994
PCAR Starlet 1403
 PCAR Starlet 8053
 Connealy Spur
 Vermilion Lass 4071
 SITZ Logo 12964
 JCH Karen 5130
 Baldridge Bronc
 Miss JT Lady of Time 203
 Sitz Bullseye 9994
 PCAR Starlet 2243

CED	BW	WW	YW	HP	Milk	Marb	RE	\$M	\$B	\$C
10	-0.3	84	149	11.6	24	1.06	0.69	68	169	287
Actual BW			Adj 205			Adj 365				
63			629			941				

Bull Bred Due Date: 03/21/35

187 Pine Creek Everelda E 3523
 DOB: 04/07/23 Freeze Brand: 3523 Reg # 20713793
 Mogck Bullseye
 Sitz Bullseye 9994
Pine Creek Bullseye 9072J
 PCAR Emma E 8132
 Mogck Bullseye
 Sitz Pride 0128
 Sitz Valubull 9835
 PCAR Emma E 304
 Sitz Bullseye 9994
PCAR Everelda Entense 7290
 PCAR Everelda Entense 0067
 Mogck Bullseye
 Sitz Pride 0128
 Sitz Upward 307R
 PCAR Everelda Entense 6157

CED	BW	WW	YW	HP	Milk	Marb	RE	\$M	\$B	\$C
2	2.6	84	150	15.9	29	0.44	0.23	51	134	225
Actual BW			Adj 205			Adj 365				
78			638			926				

Bull Bred Due Date: 03/23/25

188 Pine Creek Pride 3611
 DOB: 05/15/23 Freeze Brand: 3611 Reg # 20713782
 Silveiras Conversion 8064
 BUBS Southern Charm AA31
Pine Creek Charm 9212
 PCAR Missy 5134
 Sitz Bullseye 9994
PCAR Pride 7189
 PCAR Pride 4070
 Silveiras Conversion 8064
 Hickory Hill Erica 009
 Sitz Investment 660Z
 PCAR Missy 6150
 Mogck Bullseye
 Sitz Pride 0128
 Sitz New Design 9685
 PCAR Pride 5172

CED	BW	WW	YW	HP	Milk	Marb	RE	\$M	\$B	\$C
11	0.3	73	124	15	29	0.53	0.75	71	142	255
Actual BW			Adj 205			Adj 365				
70			565			X				

Bull Bred Due Date: 03/23/25

189 Pine Creek Everelda E 3508

DOB: 04/06/23 Freeze Brand: 3508 Reg # 20713818
SydGen Enhance
Miss JT Alli 740
Pine Creek Alliance 5197
PCAR Pride 4070
S Chisum 6175
S Blossom 0278
Pine Creek IN Focus 7022
PCAR Everelda Entense 8150
PCAR Everelda Entense 5058
PCAR Everelda Entense 8105

Table with columns: CED, BW, WW, YW, HP, Milk, Marb, RE, \$M, \$B, \$C. Row 1: 14, -0.5, 57, 106, 8.9, 38, 0.4, 0.23, 63, 123, 223. Actual BW: 81, Adj 205: 657, Adj 365: 895.

191 Pine Creek Blackcap 3589

DOB: 04/23/23 Freeze Brand: 3589 Reg # 20713664
K C F Bennett Summation
DL Summation 750
DL Princess 125
Pine Creek Bullseye 7260
PCAR Blackcap 0265
PCAR Blackcap 3005
K C F Bennett Consent Y75
Thomas Patricia 9705
DL Final Grandview 53
DL Princess 156
Sitz Bullseye 9994
PCAR Emma E 0032
Pine Creek IN Focus 7022
PCAR Blackcap 1182

Table with columns: CED, BW, WW, YW, HP, Milk, Marb, RE, \$M, \$B, \$C. Row 1: 10, -1, 53, 97, 13.9, 30, 0.77, 1, 62, 157, 266. Actual BW: 69, Adj 205: 442, Adj 365: 685.

193 Pine Creek Everelda E 3458

DOB: 03/28/23 Freeze Brand: 3458 Reg # 20713825
Woodhill Relevance
Pine Creek Relevance 0100J
PCAR Lady 5002J
Connealy Confidence Plus
Woodhill Blackbird X197-Z7
Sitz Final Product 765a
PCAR Lady 3182J
KG Four Star 6107
PCAR Everelda Entense 9058
PCAR Everelda Entense 77186
PCAR Everelda Entense 3018

Table with columns: CED, BW, WW, YW, HP, Milk, Marb, RE, \$M, \$B, \$C. Row 1: 6, 1.9, 73, 130, 10, 41, 0.56, 1.09, 60, 147, 251. Actual BW: 88, Adj 205: 634, Adj 365: 941.

195 Pine Creek Blackcap 3537

DOB: 04/09/23 Freeze Brand: 3537 Reg # 20713854
Woodhill Relevance
Pine Creek Relevance 0100J
PCAR Lady 5002J
Connealy Confidence Plus
Woodhill Blackbird X197-Z7
Sitz Final Product 765a
PCAR Lady 3182J
KG Alliance 1193
PCAR Pride 6064
Mytty In Focus
PCAR Blackcap 4049

Table with columns: CED, BW, WW, YW, HP, Milk, Marb, RE, \$M, \$B, \$C. Row 1: 10, -1.3, 47, 92, 14.9, 37, 0.86, 0.36, 73, 131, 243. Actual BW: 82, Adj 205: 580, Adj 365: 818.

190 Pine Creek Pride 3478

DOB: 04/02/23 Freeze Brand: 3478 Reg # 20713744
SydGen Enhance
Miss JT Alli 740
Pine Creek IN Focus 7022
PCAR Barbamere Nell 9085
PCAR Barbamere Nell 6050
Sitz Alliance 7544
KG Rito Lady 9152
HA Program 5652
PCAR Pride 1273

Table with columns: CED, BW, WW, YW, HP, Milk, Marb, RE, \$M, \$B, \$C. Row 1: -1, 3.2, 83, 150, 17, 43, 0.68, 0.46, 68, 151, 264. Actual BW: 95, Adj 205: 695, Adj 365: 943.

192 Pine Creek Mae 3381J

DOB: 03/15/23 Freeze Brand: 3381J Reg # 20817960
Ferguson Trailblazer 239E
Brumfield Trail Boss 057
CAV Lady Payweight 5608-7560
OCC Active Duty 522
PCAR Mae 8042J
PCAR Mae 6210J
V A R Discovery 2240
Molitor999 Barbella 940-3012
Basin Payweight 1682
CAV Lady Reserve 167-5608
R B Active Duty 010
OCC Lucy 620
Pine Creek Investment 4213J
PCAR Mae 0218J

Table with columns: CED, BW, WW, YW, HP, Milk, Marb, RE, \$M, \$B, \$C. Row 1: 8, 1.3, 63, 110, 18, 31, 0.76, 0.49, 66, 125, 228. Actual BW: 83, Adj 205: 452, Adj 365: 620.

194 Pine Creek Henrietta 3267

DOB: 03/07/23 Freeze Brand: 3267 Reg # 20817881
K C F Bennett Southside
Mead Magnitude
Mead Primrose N198
OCC Active Duty 522
PCAR Henrietta Pride 9085
PCAR Henrietta Pride 6045
Nichols Extra K205
K C F Miss 208 S11
Plattermere Weigh Up K360
Mead Primrose K247
R B Active Duty 010
OCC Lucy 620
Sitz Final Product 765a
PCAR Henrietta Pride 7051

Table with columns: CED, BW, WW, YW, HP, Milk, Marb, RE, \$M, \$B, \$C. Row 1: 15, -1.6, 75, 135, 12, 38, 0.82, 0.53, 37, 152, 234. Actual BW: 70, Adj 205: 658, Adj 365: 927.

196 Pine Creek Barb Nell 3394J

DOB: 03/17/23 Freeze Brand: 3394J Reg # 20817935
K C F Bennett Southside
Mead Magnitude
Mead Primrose N198
Pine Creek Alliance 5254
PCAR Barb Nell 8129
PCAR Barb Nell 0002
Nichols Extra K205
K C F Miss 208 S11
Plattermere Weigh Up K360
Mead Primrose K247
KG Alliance 1193
PCAR Emma E 0032
Pine Creek IN Focus 7022
PCAR Barb Nell 8117

Table with columns: CED, BW, WW, YW, HP, Milk, Marb, RE, \$M, \$B, \$C. Row 1: 18, -2.7, 61, 110, 13.6, 33, 0.57, 0.49, 71, 105, 207. Actual BW: 72, Adj 205: 580, Adj 365: 836.

197 Pine Creek Pride 3231

DOB: 03/01/23 Freeze Brand: 3231 Reg # 20713707
Woodhill Relevance
Pine Creek Relevance 0076
PCAR Ruby 4021
Connealy Confidence Plus
Woodhill Blackbird X197-Z7
KG Alliance 1193
PCAR Ruby 2281
Sitz Bullseye 9994
PCAR Emma E 0032
Sitz Bullseye 9994
PCAR Pride 4070

Table with columns: CED, BW, WW, YW, HP, Milk, Marb, RE, \$M, \$B, \$C. Row 1: 14, -3.1, 63, 109, 15.4, 36, 0.56, 0.99, 70, 133, 243. Actual BW: 52, Adj 205: X, Adj 365: 792.

199 Pine Creek Missy 3586

DOB: 04/22/23 Freeze Brand: 3586 Reg # 20713713
Sitz Bullseye 9994
Pine Creek Bullseye 8081J
PCAR Lady 5002J
Hoover Dam
PCAR Missy 2172
PCAR Missy 6150
Mogck Bullseye
Sitz Pride 0128
Sitz Final Product 765a
PCAR Lady 3182J
SydGen C C & 7
Erica of Ellston C124
Sitz Greatplains 8102
Pcar Missy 352

Table with columns: CED, BW, WW, YW, HP, Milk, Marb, RE, \$M, \$B, \$C. Row 1: -3, 3.6, 68, 117, 9.8, 27, 0.86, 0.2, 60, 153, 258. Actual BW: 82, Adj 205: 623, Adj 365: 857.

201 Pine Creek Mae 3223J

DOB: 02/14/23 Freeze Brand: 3223J Reg # 20817908
Vermilion Spur E119
Heiken Broadview
JCH BHA Karen 7815
Sitz Bullseye 9994
PCAR Mae 1264j
PCAR Mae 4227J
Connealy Spur
Vermilion Lass 4071
SITZ Logo 12964
JCH Karen 5130
Mogck Bullseye
Sitz Pride 0128
KG Alliance 1193
PCAR Mae 0218J

Table with columns: CED, BW, WW, YW, HP, Milk, Marb, RE, \$M, \$B, \$C. Row 1: 2, 2.7, 80, 148, 11.2, 26, 0.83, 0.72, 65, 173, 289. Actual BW: 73, Adj 205: 597, Adj 365: 928.

203 Pine Creek Eisa E 3237

DOB: 03/03/23 Freeze Brand: 3237 Reg # 20817951
S A V Rainfall 6846
Square B True North 8052
Elbanna of Conanga 1209
Pine Creek Alliance 7255
PCAR Eisa Evergreen 9150
PCAR Eisa Evergreen 0200
Coleman Charlo 0256
S A V Blackcap May 4136
Connealy Consensus
Elbasta of Conanga 9703
KG Alliance 1193
PCAR Pride 3046
Hoover Dam
PCAR Eisa Evergreen 2135

Table with columns: CED, BW, WW, YW, HP, Milk, Marb, RE, \$M, \$B, \$C. Row 1: 13, -2, 50, 95, 14.2, 25, 1.3, 0.23, 61, 164, 274. Actual BW: 64, Adj 205: 546, Adj 365: 840.

198 Pine Creek Lady 3444J

DOB: 03/26/23 Freeze Brand: 3444J Reg # 20713880
3F Epic 4631
Pine Creek Epic 9128
PCAR Erica 6082
Sitz Final Product 765a
PCAR Lady 3182J
Varilek Product 2010 04
Zebo Queen 1072
Sitz Final Product 765a
PCAR Erica 0201
Connealy Final Product
Sitz Pride 88T
Pine Creek Heritage 1215
PCAR Lady 0221J

Table with columns: CED, BW, WW, YW, HP, Milk, Marb, RE, \$M, \$B, \$C. Row 1: -3, 3.4, 63, 118, 11.4, 34, 0.68, 0.57, 46, 117, 198. Actual BW: 84, Adj 205: 584, Adj 365: 872.

200 Pine Creek Henrietta 3368

DOB: 03/15/23 Freeze Brand: 3368 Reg # 20713774
K C F Bennett Summation
DL Summation 750
DL Princess 125
Sitz Bullseye 9994
PCAR Henrietta Pride 7112
PCAR Henrietta Pride 3117
K C F Bennett Consent Y75
Thomas Patricia 9705
DL Final Grandview 53
DL Princess 156
Mogck Bullseye
Sitz Pride 0128
Connealy Consensus 7229
PCAR Henrietta Pride 5015

Table with columns: CED, BW, WW, YW, HP, Milk, Marb, RE, \$M, \$B, \$C. Row 1: 9, 1.2, 64, 123, 4.1, 25, 0.53, 0.65, 44, 165, 258. Actual BW: 81, Adj 205: 602, Adj 365: 877.

202 Pine Creek Henrietta 3225

DOB: 02/14/23 Freeze Brand: 3225 Reg # 20713704
Basin Deposit 6249
Basin Safe Deposit 9324
Basin Joy 2006
Pine Creek Chisum 7008
PCAR Henrietta Pride 1320
PCAR Henrietta Pride 3117
Basin Advance 3134
Basin Lucy 4288
Summitcrest Complete 1P55
Basin Joy 566T
S Chisum 255
PCAR Henrietta Pride 5040
Connealy Consensus 7229
PCAR Henrietta Pride 5015

Table with columns: CED, BW, WW, YW, HP, Milk, Marb, RE, \$M, \$B, \$C. Row 1: 8, 0.2, 63, 113, 12.5, 18, 0.61, 0.38, 81, 154, 281. Actual BW: 82, Adj 205: 491, Adj 365: 697.

204 Pine Creek Miss Jane 3438J

DOB: 03/24/23 Freeze Brand: 3438J Reg # 20713879
3F Epic 4631
Pine Creek Epic 9128
PCAR Erica 6082
KG Alliance 1193
PCAR Miss Jane 4198J
Miss JT Jane 478
Varilek Product 2010 04
Zebo Queen 1072
Sitz Final Product 765a
PCAR Erica 0201
Sitz Alliance 7544
KG Rito Lady 9152
Mr JT Explorer Jr 273
Miss J T Spectra 224

Table with columns: CED, BW, WW, YW, HP, Milk, Marb, RE, \$M, \$B, \$C. Row 1: 1, 1.7, 74, 137, 11.7, 35, 0.46, 0.51, 52, 153, 250. Actual BW: 95, Adj 205: 621, Adj 365: 933.

205 *Pine Creek Eisa E 3524*
 DOB: 04/07/23 Freeze Brand: 3524 Reg # 20713672
 K C F Bennett Consent Y75
 K C F Bennett Summation Thomas Patricia 9705
DL Summation 750 DL Final Grandview 53
 DL Princess 125 DL Princess 156
 KG Four Star 6107 KG Four Star 3036
 KG Jessi Lynn 4450
PCAR Eisa Evergreen 0323 OCC Active Duty 522
 PCAR Eisa Evergreen 7209 PCAR Eisa Evergreen 4135

CED	BW	WW	YW	HP	Milk	Marb	RE	\$M	\$B	\$C
5	2.1	66	121	10.5	33	0.64	0.88	72	152	269
Actual BW			Adj 205			Adj 365				
76			429			663				

Bull Bred Due Date: 04/20/25

207 *Pine Creek Lady 3573*
 DOB: 04/21/23 Freeze Brand: 3573 Reg # 20713710
 Mogck Bullseye
 Sitz Bullseye 9994 Sitz Pride 0128
Pine Creek Bullseye 8081J Sitz Final Product 765a
 PCAR Lady 5002J PCAR Lady 3182J
 Ideal 5570 of 0452 0534
 Ideal 9512 of 5570 7814 Ideal 7814 of 2P88 086
 Mr JT Power Design 4109
PCAR Lady 2089 PCAR Lady 4050
 PCAR Lady 6033

CED	BW	WW	YW	HP	Milk	Marb	RE	\$M	\$B	\$C
1	0.9	57	100	11	24	0.37	0.81	66	133	239
Actual BW			Adj 205			Adj 365				
78			602			850				

Bull Bred Due Date: 04/30/25

209 *Pine Creek Jane 3348J*
 DOB: 03/13/23 Freeze Brand: 3348J Reg # 20817954
 Coleman Charlo 0256
 S A V Rainfall 6846 S A V Blackcap May 4136
 Connealy Consensus
Square B True North 8052 Elbasta of Conanga 9703
 Elbanna of Conanga 1209
 Sitz Investment 660Z
 Pine Creek Investment 4213J PCAR Lady Bell 0354
PCAR Jane 8219J Basin Payweight 107S
 PCAR Jane 2032J Miss JT Jane 478

CED	BW	WW	YW	HP	Milk	Marb	RE	\$M	\$B	\$C
9	0.8	49	95	17.2	15	0.9	0.41	68	138	247
Actual BW			Adj 205			Adj 365				
76			551			794				

Bull Bred Due Date: 05/04/25

211 *Pine Creek Erica 3502*
 DOB: 04/05/23 Freeze Brand: 3502 Reg # 20713804
 EF Commando 1366
 Baldrige Bronc Baldrige Isabel Y69
Mr JT Bronc 818 WMR Timeless 458
 Miss JT Lady of Time 203 Miss JT Becky 506
 Mogck Bullseye
 Sitz Bullseye 9994 Sitz Pride 0128
PCAR Erica 8050 Sitz Valubull 9835
 PCAR Erica 8223 PCAR Erica 6087

CED	BW	WW	YW	HP	Milk	Marb	RE	\$M	\$B	\$C
5	1.2	65	111	5.3	25	0.44	0.81	32	147	223
Actual BW			Adj 205			Adj 365				
84			580			823				

Bull Bred Due Date: 05/07/25

206 *Pine Creek Ellie Elite 3457*
 DOB: 03/28/23 Freeze Brand: 3457 Reg # 20713766
 Varilek Product 2010 04
 3F Epic 4631 Zebo Queen 1072
Pine Creek Epic 9128 Sitz Final Product 765a
 PCAR Erica 6082 PCAR Erica 0201
 SydGen C C & 7
 Pine Creek Heritage 1215 PCAR Barb Nell 5027
 Mr JT Ribeye 946
PCAR Ellie Elite 6296 PCAR Ellie Elite 4082
 PCAR Ellie Elite 1136

CED	BW	WW	YW	HP	Milk	Marb	RE	\$M	\$B	\$C
11	-0.8	61	112	13.2	29	0.24	0.29	57	114	205
Actual BW			Adj 205			Adj 365				
69			617			900				

Bull Bred Due Date: 04/23/25

208 *Pine Creek Erica 3505*
 DOB: 04/05/23 Freeze Brand: 3505 Reg # 20713658
 Sitz Stellar 726D
 Sitz Resilient 10208 Sitz Miss Burgess 1856
Pine Creek Resilient 1011 LD Capitalist 316
 PCAR Polly 9020 PCAR Polly 7288
 R B Active Duty 010
 OCC Active Duty 522 OCC Lucy 620
 Pine Creek Investment 4213J
PCAR Erica 0186 PCAR Erica 8134
 PCAR Erica 6098

CED	BW	WW	YW	HP	Milk	Marb	RE	\$M	\$B	\$C
11	0.6	59	106	15.5	36	0.38	0.71	95	114	243
Actual BW			Adj 205			Adj 365				
80			561			751				

Bull Bred Due Date: 05/02/25

210 *Pine Creek Ruth 3454*
 DOB: 03/28/23 Freeze Brand: 3454 Reg # 20713663
 K C F Bennett Consent Y75
 K C F Bennett Summation Thomas Patricia 9705
DL Summation 750 DL Final Grandview 53
 DL Princess 125 DL Princess 156
 S Chisum 255
 Pine Creek Chisum 7008 PCAR Henrietta Pride 5040
 Sitz Final Product 765a
PCAR Ruth 0259 PCAR Ruth 9229
 PCAR Ruth 6058

CED	BW	WW	YW	HP	Milk	Marb	RE	\$M	\$B	\$C
16	-2.5	41	78	15.1	34	0.62	0.67	88	126	251
Actual BW			Adj 205			Adj 365				
58			470			684				

Bull Bred Due Date: 05/07/25



Some of the bred heifers



Abby Feldman Senior



Katelyn Feldman 7th Grade



Paige Weiss 4th Grade



Avery Brogdon 4th Grade



Mackenzie Brogdon 2nd Grade



Grace Weiss 1st Grade



We are so thankful to all of our wonderful customers!





Lyle & Miriam Weiss
17013 Maurine Rd.
Faith, SD 57626



Selling: **41 Registered Coming 2 Year Old Angus Bulls**
111 Registered Bred Angus Heifers

Friday, December 20th, 2024 • 1:00 PM MT Faith Livestock Auction • Faith, SD